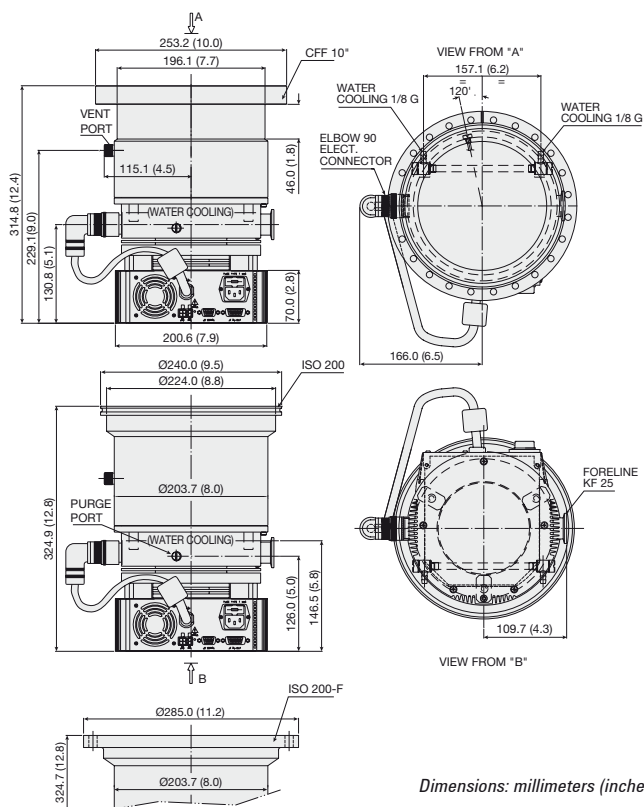


AGILENT TURBO PUMP MODELS

▶ Agilent Turbo-V 701 Navigator



Dimensions: millimeters (inches)

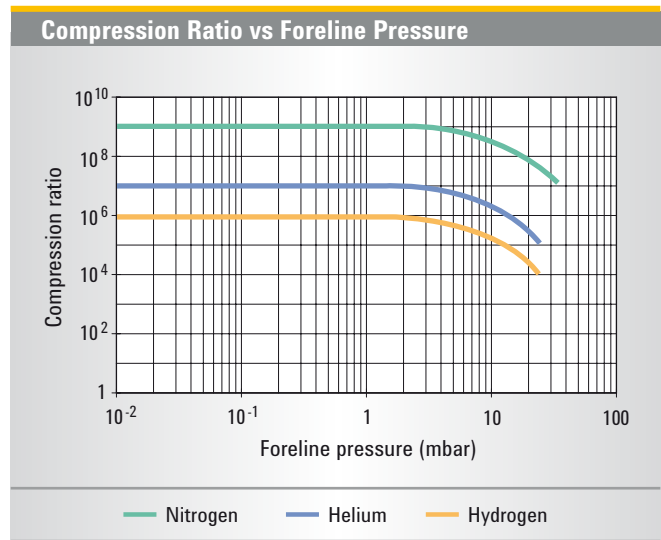
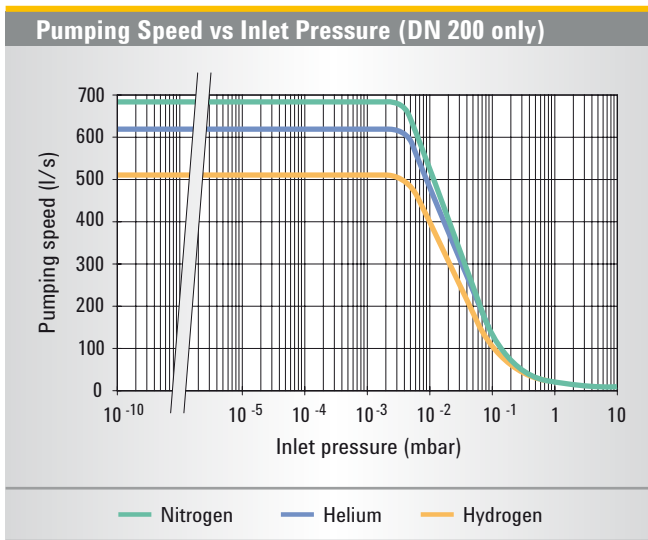
Technical Specifications

Pumping speed (with inlet screen) CFF 10" or ISO 200:	N ₂ : 690 l/s	He: 620 l/s	H ₂ : 510 l/s
Compression ratio	N ₂ : 1 x 10 ⁹	He: 1 x 10 ⁷	H ₂ : 1 x 10 ⁶
Base pressure* (with minimum recommended forepump)	<1 x 10 ⁻¹⁰ mbar (< 1 x 10 ⁻¹⁰ Torr)		
Inlet flange	CFF 10"	ISO 200	ISO 200-F bolted
Foreline flange	KF 25		
Rotational speed	42,000 rpm		
Start-up time	<5 minutes		
Recommended forepump	Mechanical: Agilent DS 402 Dry scroll: Agilent TS300, IDP-15		
Operating position	Any		
Cooling requirements	Natural air convection Water optional (use water with electrical conductivity ≤ 500 μS/cm)		
Bakeout temperature	120 °C at inlet flange max. (CF flange) 80 °C at inlet flange max. (ISO flange)		
Vibration level (displacement)	<0.01 μm at inlet flange		
Weight kg (lbs)	ISO flange 19.4 (43.0) CF flange 25.5 (54.2) CF and ISO bolted flange 25.5 (54.2)		

* According to PNEUROP 5608.

SEM version available on request

TURBO PUMPS



Ordering Information

Description	Weight kg (lbs)	Part Number
Complete Systems		
Turbo-V 701 Navigator complete system, ISO 200 flange	19.0 (43.0)	9698836
Turbo-V 701 Navigator complete system, ISO 200-F bolted flange	25.0 (56.0)	9698843
Turbo-V 701 Navigator complete system, 10" CF flange	25.0 (56.0)	9698837
<i>Complete system includes: Pump, Inlet screen, Controller mounted on the bottom, 2 Mains cables (NEMA plug and European plug).</i>		
Pumps		
Turbo-V 701 Navigator pump, ISO 200	16.0 (35.0)	9698926
Turbo-V 701 Navigator pump, ISO 200-F bolted	22.0 (49.0)	9698945
Turbo-V 701 Navigator pump, 10" CFF	22.0 (49.0)	9698927
Controllers		
Turbo-V 701 Navigator controller 120/220 V - 50/60 Hz	3.0 (6.0)	9698977
Turbo-V 701 Rack controller, 100-240 V	16.0 (35.0)	X3501-64002
Accessories		
Mains cable NEMA plug, 3 m long		9699958
Mains cable European plug, 3 m long		9699957
Serial cable and T-plus Software (previous release Navigator 2.2 included in the CD)		9699883
Inlet screen DN 200		9699316
Water cooling kit		9699337
Plastic water cooling kit		9699347
Air cooling kit for use with Navigator controller		9699339
Air cooling kit for use with standard rack controller, 24 V		X3501-68001
Bracket for Navigator controller side mounting		9699349
Vibration damper, ISO 200	5.0 (10.0)	9699346
Vibration damper, CFF 10"	5.0 (10.0)	9699336
Vent flange, NW 10 KF / M8		9699108
Vent valve kit for standard rack controller		X3501-68002
Vent valve for Navigator controller		9699834
Purge valve 10 SCCM NW16KF – M12		9699239
Purge valve 10 SCCM ¼ Swagelok – M12		9699240