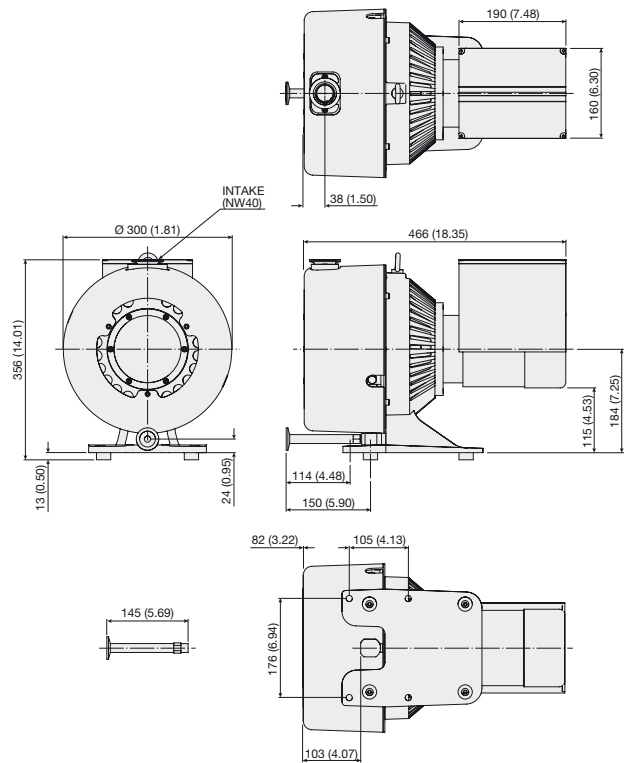


PUMP MODELS

▶ Agilent TriScroll 600 Inverter



Dimensions: millimeters (inches)

TriScroll Inverter pumps apply the benefits of frequency inverter technology to the performance of Agilent TriScroll dry primary vacuum pumps. TriScroll Pumps eliminate the frequent maintenance requirements of oil-sealed rotary vane pumps, simplifying regulatory and environmental compliance, and eliminating oil disposal costs. Inverter-driven TriScroll 600 pumps also deliver:

- Constant pumping speed worldwide regardless of line frequency
- Optimal pumping speed selection by adjustment of the rotational speed of the pump via RS232 or 0–10V control signal
- Monitoring of pump parameters via serial interface
- Remote start/stop with a contact closure made possible by a standard D-shell connector
- Optimal rotational speed selection reduces noise and vibration levels in the work area with little loss in base pressure performance of the pump

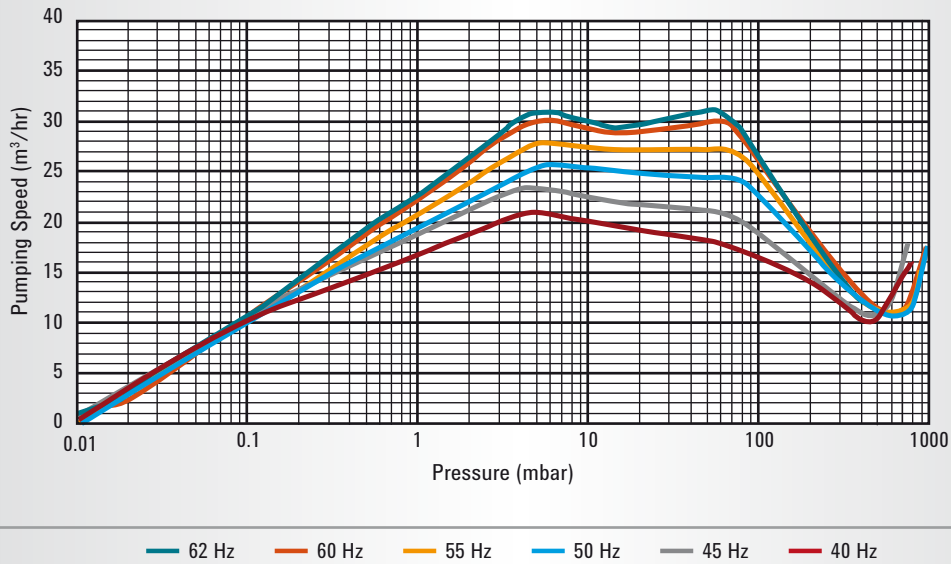
Technical Specifications

Pumping speed @ 60 Hz	500 l/m, 30 m ³ /hr, 17.7 cfm (at 60 Hz drive frequency, variable)
Ultimate pressure	9.3 x 10 ⁻³ mbar (7.0 x 10 ⁻³ Torr)
Maximum inlet pressure	1.0 atmosphere (0 psig)
Maximum outlet pressure	1.1 atmosphere (1.5 psig)
Inlet connection	NW40
Exhaust connection	3/8" Female NPT with swivel (NW25 adapter provided)
Gas ballast	1/4" Female NPT (shipped with 40 micron filter installed; port plug also provided)
Operating voltages	200-240 V, 1Ø, 50/60 Hz
Maximum line current	200 V; 5 A 240 V; 4.2 A
Weight	Pump only: 31 kg (68 lbs) Shipping weight: 39 kg (85 lbs)
Certification	CE, CSA and RoHS

NOTE: Scroll pumps are not suitable for pumping corrosive, explosive or particulate-forming gases.

DRY SCROLL PUMPS

TriScroll 600 Inverter Pumping Speed – Air/N₂



Dry Scroll
Pumps

Ordering Information

Description	Part Number
TriScroll 600 dry vacuum pump, 1Ø, 200-240 V	PTS06001INV
Power Cord Selection	Part Number
Europe, 10 A / 220-230 V, 2.5 meter	656494220
Denmark, 10 A / 220-230 V, 2.5 meter	656494225
Switzerland, 10 A / 230 V, 2.5 meter	656494235
UK/Ireland, 13 A / 230 V, 2.5 meter	656494250
India, 10 A / 220-250 V, 2.5 meter	656494245
Israel, 10 A / 230 V, 2.5 meter	656494230
North America, 10 A / 230 V, 2.5 meter	656494255

Accessories – Refer to the Scroll Accessories section beginning on page 27

Maintenance/Service Parts – Refer to the Scroll Service Parts section beginning on page 34