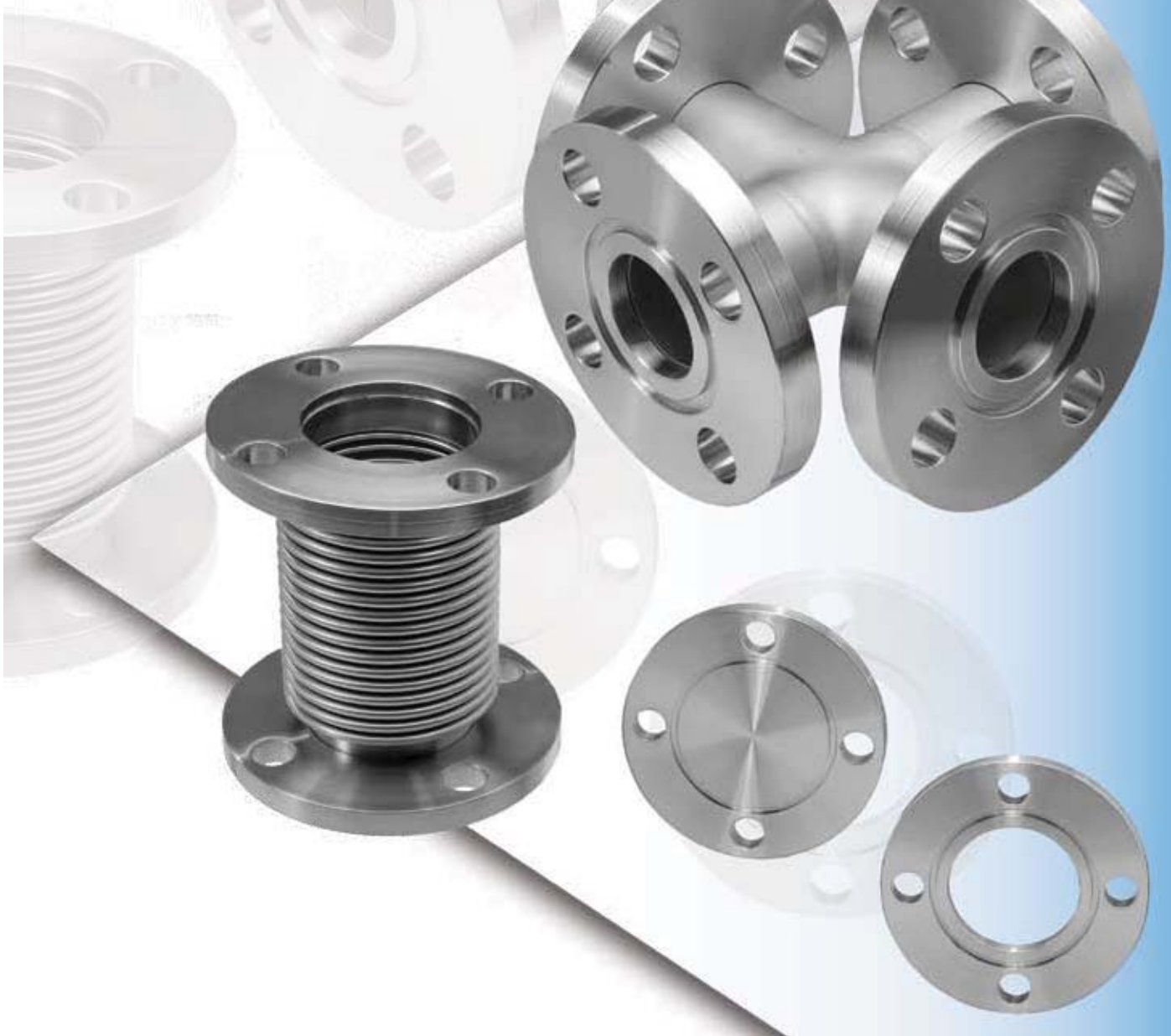




ASA/ANSI FLANGES & FITTINGS





○	ASA/ANSI Section Introduction	6.3 – 6.5
	ASA/ANSI Hardware Introduction	6.6
	Bolt Kits.....	6.7
	Adaptive Bolt Hole Bushing	6.7
	Viton® O-Rings.....	6.7
	ASA/ANSI Flanges Introduction	6.8 & 6.9
	100ASA Flanges (4.25 in. O.D.) – Fixed, Rotatable, Grooved	6.10 & 6.11
	150ASA Flanges (5.00 in. O.D.) – Fixed, Rotatable, Grooved	6.12 & 6.13
	200ASA Flanges (6.00 in. O.D.) – Fixed, Rotatable, Grooved	6.14 & 6.15
	300ASA Flanges (6.50 in. O.D.) – Fixed, Rotatable, Grooved	6.16 & 6.17
	400ASA Flanges (9.00 in. O.D.) – Fixed, Rotatable, Grooved	6.18 & 6.19
	600ASA Flanges (11.0 in. O.D.) – Fixed, Rotatable, Grooved.....	6.20 & 6.21
	800ASA Flanges (13.5 in. O.D.) – Fixed, Rotatable, Grooved	6.22 & 6.23
	1000ASA Flanges (16.5 in. O.D.) – Fixed, Rotatable, Grooved	6.24 & 6.25
	ASA/ANSI Fittings Introduction	6.26 & 6.27
	Half Nipple.....	6.28 & 6.29
	Nipple	6.30 & 6.31
	Flexible Nipple	6.32 & 6.33
	Reducer Nipple, Straight.....	6.34 & 6.35
	45° Elbow.....	6.36 & 6.37
	90° Elbow, Radius	6.38 & 6.39
	90° Elbow, Mitered	6.40 & 6.41
	Tee	6.42 & 6.43
	Cross	6.44 & 6.45
	5-Way Cross.....	6.46 & 6.47
	6-Way Cross.....	6.48 & 6.49
	Hybrid Adapters	6.50

A&N Corporation

707 SW 19th Ave.
 Williston, FL 32696
 1(800) FLANGE1
 FAX (352) 528-3441
 www.ancorp.com



ASA/ANSI FLANGES



ASA/ANSI Conversion Chart

ASA	ANSI	A&N Reference#
4.25	1.0	100ASA
5.00	1.5	150ASA
6.00	2.0	200ASA
7.50	3.0	300ASA
9.00	4.0	400ASA
11.00	6.0	600ASA
13.50	8.0	800ASA
16.00	10.0	1000ASA

Background

A&N's ASA/ANSI flanges and fittings are manufactured for compatibility with 150 lbs. ASA flanges and 150 ANSI flanges. The ASA/ANSI flange specification was originally created for use with steam pipes. Now adapted for vacuum use the system utilizes an elastomer seal and is capable of achieving high vacuum pressure levels.

All flanges offered by A&N Corporation are manufactured on state-of-the-art CNC (computer controlled) lathes to ensure consistency with dimensional tolerances, and extremely fine surface finishes. Water soluble, non-sulfur based coolants are used during the manufacturing process. The flanges are cleaned in an ultrasonic de-ionized water based cleaning system and vacuum packaged free from visible particulates and oils, ready for immediate use in any vacuum application.

Overview

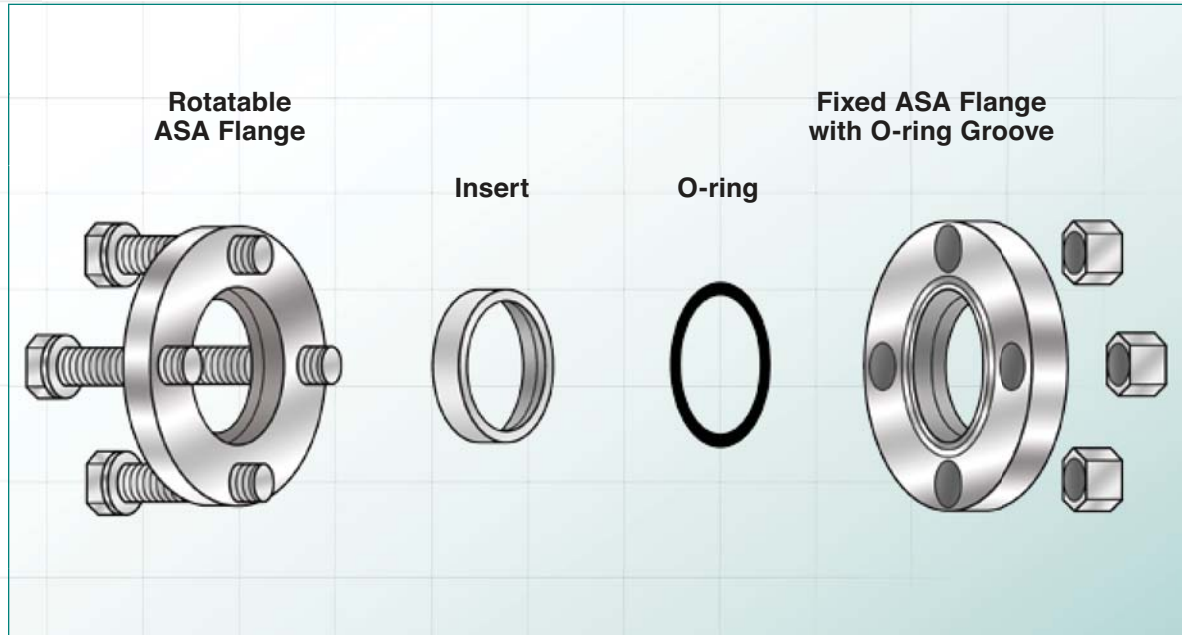
ASA/ANSI flanges provide a complete range of fittings to mount with tubing sized from 1 inch up to 12 inches in diameter. The flange system consists of two flanges, a sealing ring and bolt fasteners to compress the seal between the two flanges. A pair of ASA/ANSI flanges must have one grooved flange to accept the sealing ring and one smooth face flange onto which the seal will be made. To ease system assembly rotatable flanges are available for bolt hole alignment.

Specifications

- Vacuum rated to 1×10^{-8} Torr.
- Leak rating $< 1 \times 10^{-9}$ std. cc/s helium
- Temperature range: -20°C to 200°C
- Standard sizes: 5 inch to 16 inches O.D. (for tubing diameter 1 inch up to 12 inches)
- Materials:
 - Flanges and fittings: 304 stainless steel
 - Elastomer seals: Viton[®]

Features

- Reusable flanges and seals
- Rotatable flanges for easier bolt hole alignment
- Adapters to other flange systems available
- Interchangeable with all other flanges and assemblies made to 150 lbs. ASA/ANSI standards



ASA/ANSI Standard Sealing Assemblies

The ASA/ANSI flange system provides a complete range of flanges to mount with tubing sized 1 inch up to 12 inches diameter. The ASA/ANSI seal assembly consists of three types of sub-components, two flanges, a sealing O-ring and a bolt fastener kit to compress the seal between the two flanges.

ASA/ANSI flanges are available in two general styles: fixed and rotatable. Fixed flanges have a set bolt hole orientation while rotatable flanges have a two piece design allowing for bolt hole rotation to ease bolt alignment when mating the two flanges. The two pieces of the rotatable ASA/ANSI flange are called the insert and the housing (in which the bolt holes are machined). When installing these components the housing is placed behind the insert on the tubing prior to welding the insert to the tubing. Both fixed and rotatable flanges are available with an o-ring groove. All ASA/ANSI sealing assemblies must include one smooth face ASA/ANSI flange and one grooved face flange. The sealing o-ring is placed into the groove prior to compressing the flanges together with a bolt kit. Flanges in this system are sized according to the nominal internal diameter for the tubing onto which they will be welded. When adding new flanges to an existing vacuum line, valve or chamber carefully compare all dimensions to be sure you are ordering a compatible flange. The most important dimensions to consider are the bolt circle diameter and the internal diameter of the flanges.

ASA/ANSI fluoroelastomer o-ring seals are capable of high vacuum pressures and temperatures as high as 200°C. The sealing ring is placed into the grooved flange and compressed against the smooth sealing face of the mating flange. Viton® gaskets are re-usable and can be used many times to make new vacuum tight seals.

ASA/ANSI fasteners are bolts, nuts and washers made of high tensile strength stainless steel. Bolts and nuts are offered with standard hex-head design.

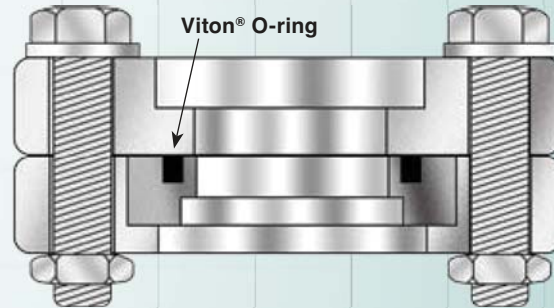
A&N Corporation

707 SW 19th Ave.
Williston, FL 32696
1(800) FLANGE1
FAX (352) 528-3441
www.ancorp.com



ASA/ANSI Standard Sealing Assemblies

A sealing pair of ASA/ANSI flanges contains one flange with a smooth face and one flange with an o-ring groove machined into the surface. A Viton® sealing o-ring is placed into the groove of one of the two flanges. The flanges compress the o-ring as the fastening bolts are tightened. The o-ring cold flows under this pressure and fills microscopic surface imperfections on the sealing flange face creating a vacuum tight seal capable of withstanding temperature extremes from -20°C up to 200°C and pressures as low as 1×10^{-8} Torr.





ASA/ANSI Hardware

This elastomer sealed flange system uses bolt kits to fasten together your flanges and Viton® elastomer o-rings to create a seal.



ASA/ANSI Fasteners

These bolt kits fasten two flanges together that both have clearance bolt holes. The bolts slide easily through smooth bored bolt holes and are fastened with a nut and washer on the far side of the flange assembly. These bolt kits are offered in hex-head bolt, nut and washer kits.^{*1}



For More Info...

*1 See pg. 6.7 for sizes and details.

*2 See pg. 6.7 for sizes and details.

ASA/ANSI Seals

Viton® seals are a vacuum grade fluorocarbon elastomer o-rings that are compressed between the two ASA/ANSI flanges to create a seal capable of achieving high vacuum pressure. Viton® seals have a temperature range of -20°C up to 150°C (200°C intermittent use) and may be re-used many times for re-installation of ASA/ANSI sealing assemblies.^{*2}



A&N Corporation

707 SW 19th Ave.
Williston, FL 32696
1(800) FLANGE1
FAX (352) 528-3441
www.ancorp.com



Bolt Kits Fasteners

Materials:

- Hex-head bolt: stainless steel
- Hardware (nut and washer): stainless steel

Product Notes

- For use with clearance bolt hole ASA/ANSI flanges

PART NUMBER	REFERENCE NUMBER	QUANTITY	BOLT SIZE
0606500	100ASA-BK	4	9/16-12x1 1/2 in.
0606501	150ASA-BK	4	9/16-12x1 1/2 in.
0606502	200ASA-BK	4	5/8-11x1 1/2 in.
0606503	300ASA-BK	4	5/8-11x1 1/2 in.
0606504	400ASA-BK	8	5/8-11x1 1/2 in.
0606505	600ASA-BK	8	3/4-10x2 1/4 in.
0606506	800ASA-BK	8	3/4-10x2 1/4 in.
0606507	1000ASA-BK	12	3/4-10x2 1/4 in.



Viton® O-ring For ASA Flanges

Materials:

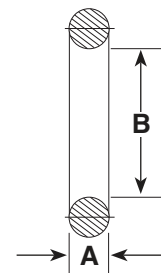
- Fluorocarbon elastomer

Product Notes

- Multi-use seal

- Temperature range: -70°C up to 150°C (intermittent use to 200°C)

- Pressure range: HV (approx. 1×10^{-8} Torr)



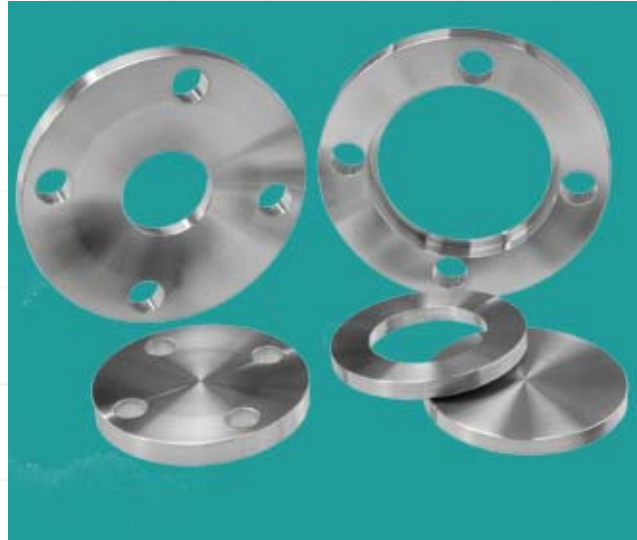
PART NUMBER	REFERENCE NUMBER	STD NUMBER	A	B
0600225	100ASA-OV	2-225	0.120	1.875
0600230	150ASA-OV	2-230	0.120	2.500
0600238	200ASA-OV	2-238	0.120	3.500
0600247	300ASA-OV	2-247	0.120	4.625
0600258	400ASA-OV	2-258	0.120	6.000
0600266	600ASA-OV	2-266	0.120	8.000
0600274	800ASA-OV	2-274	0.120	10.000
0600278	1000ASA-OV	2-278	0.120	12.000



ASA/ANSI Flanges

A&N Corporation manufactures flanges for our own use as we manufacture modular fittings (tee's, elbows and nipples) valves, feedthroughs, chambers and other components. We offer these same flanges for those customers that have in-house welding capabilities and desire to customize their system or components themselves.

All A&N Corporation ASA/ANSI flanges are manufactured to industry specifications to ensure compatibility with other manufacturer's flanges.



Specifications

- Vacuum rated to 1×10^{-8} Torr.
- Leak rating < 1×10^{-9} std. cc/s helium
- Temperature range: -20°C to 200°C
- Standard sizes: 5 inch to 16 inches O.D.
(for tubing diameter 1 inch up to 12 inches)

Materials:

- Flanges and fittings: 304 stainless steel
- Elastomer seals: Viton®

Features

- Reusable flanges
- Rotatable flanges for easier bolt hole alignment
- Adapters to other flange systems available
- Interchangeable with other ASA/ANSI style flanges made to industry standards

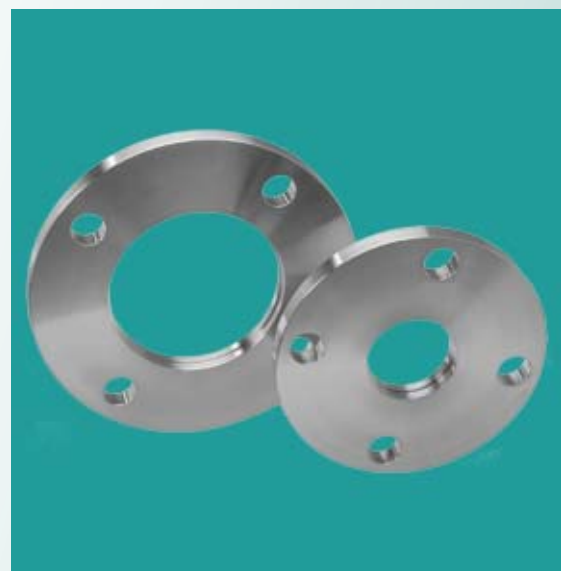


For More Info...

*3 See pg. 7.10 - 7.24 for sizes and additional details

ASA/ANSI Fixed Weld Flanges

These flanges are manufactured with a weld prep and tubing bore for immediate installation on your system with no additional alteration. Fixed flanges have a set bolt hole orientation. Both fixed and rotatable flanges are available with an o-ring groove. All ASA/ANSI sealing assemblies must include 1 smooth face ASA/ANSI flange and 1 grooved face flange. Fixed and rotatable flanges have clearance bolt holes. Clearance bolt holes allow for unrestricted passage of a bolt through the flanges. The bolt is then tightened with a nut on the back side of the flange assembly. Standard ASA/ANSI weld flanges are manufactured of 304 stainless steel. Other materials are available on request.*³



A&N Corporation

707 SW 19th Ave.
Williston, FL 32696
1(800) FLANGE1
FAX (352) 528-3441
www.ancorp.com

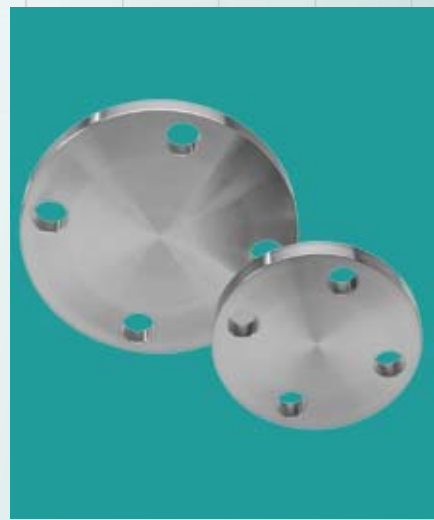
ASA/ANSI Rotatable Weld Flanges

These flanges are manufactured with a weld prep and tubing bore for immediate installation on your system with no additional alteration. Rotatable flanges have a two piece design allowing for bolt hole rotation to ease bolt alignment when mating the two flanges. Both fixed and rotatable flanges are available with an o-ring groove. All ASA/ANSI sealing assemblies must include 1 smooth face ASA/ANSI flange and 1 grooved face flange. Fixed and rotatable flanges have clearance bolt holes. Clearance bolt holes allow for unrestricted passage of a bolt through the flanges. The bolt is then tightened with a nut on the back side of the flange assembly. Standard ASA/ANSI weld flanges are manufactured of 304 stainless steel. Other materials are available on request.*⁴



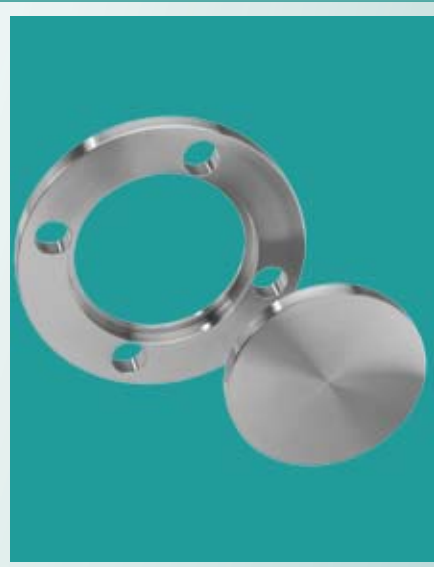
ASA/ANSI Fixed Blank Flanges

These flanges are manufactured with no weld prep and no tubing bore. Blank flanges are commonly used to close unused ports or they are altered by customers with their own custom machining capability for a special use. Fixed flanges have a set bolt hole orientation. Both fixed and rotatable flanges are available with an o-ring groove. All ASA/ANSI sealing assemblies must include 1 smooth face ASA/ANSI flange and 1 grooved face flange. Fixed and rotatable flanges have clearance bolt holes. Clearance bolt holes allow for unrestricted passage of a bolt through the flanges. The bolt is then tightened with a nut on the back side of the flange assembly. Standard ASA/ANSI weld flanges are manufactured of 304 stainless steel. Other materials are available on request.*⁵



ASA/ANSI Rotatable Blank Flanges

These flanges are manufactured with no weld prep and no tubing bore. Blank flanges are commonly used to close unused ports or they are altered by customers with their own custom machining capability for a special use. Rotatable flanges have a two piece design allowing for bolt hole rotation to ease bolt alignment when mating the two flanges. Both fixed and rotatable flanges are available with an o-ring groove. All ASA/ANSI sealing assemblies must include 1 smooth face ASA/ANSI flange and 1 grooved face flange. Fixed and rotatable flanges have clearance bolt holes. Clearance bolt holes allow for unrestricted passage of a bolt through the flanges. The bolt is then tightened with a nut on the back side of the flange assembly. Standard ASA/ANSI weld flanges are manufactured of 304 stainless steel. Other materials are available on request.*⁶



For More Info...

*⁴ See pg. 7.11 - 7.25 for sizes and additional details

*⁵ See pg. 7.10 - 7.24 for sizes and additional details

*⁶ See pg. 7.11 - 7.25 for sizes and additional details



100 ASA - 4.25 inch O.D.

Product Features:

- Designed to fit standard inch tubing O.D.'s
- Self-aligning
- Internal weld
- Rotatable flanges for easier bolt hole alignment
- Blank flanges to close unused ports or custom modify
- Interchangeable with other ASA/ANSI style flanges
- Adapters to other flange systems available see section 8

Product Specifications

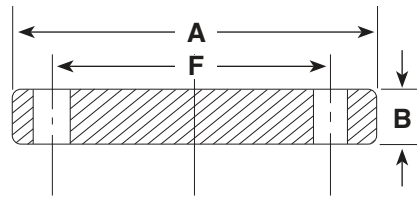
- Pressure range: HV (approx. 1×10^{-8} Torr)
- Temperature range: -20°C up to 200°C
- Standard materials: 304 grade stainless steel

Options: Call for price and availability

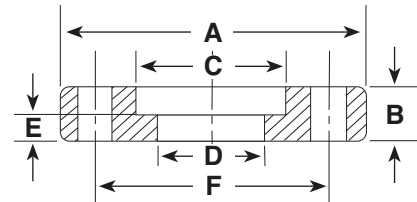


100 ASA - Fixed Flanges

BLANK



BORED

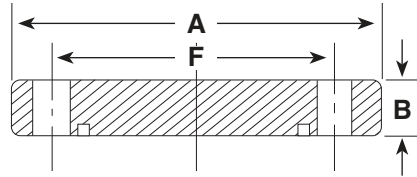


PART NUMBER	REFERENCE NUMBER	OD A	THICKNESS B	BORE C	THRU HOLE D	SETBACK E	BOLT CIRCLE F	BOLT HOLE NO.	BOLT HOLE SIZE
6000000	100ASA-000	4.25	0.500	Blank	-	-	3.125	4	0.625
6000001	100ASA-100	4.25	0.500	1.010	.875	.250	3.125	4	0.625
6000002	100ASA-150	4.25	0.500	1.510	1.375	.250	3.125	4	0.625

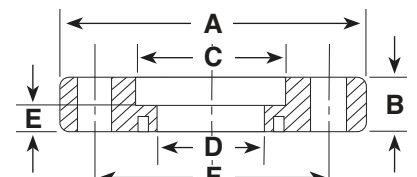


100 ASA - Fixed, Grooved Flanges

BLANK WITH O-RING GROOVE



BORED WITH O-RING GROOVE



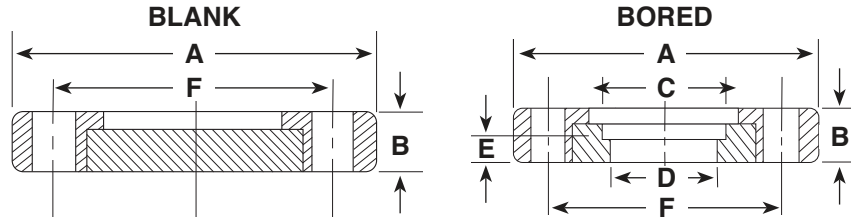
PART NUMBER	REFERENCE NUMBER	OD A	THICKNESS B	BORE C	THRU HOLE D	SETBACK E	BOLT CIRCLE F	BOLT HOLE NO.	BOLT HOLE SIZE
6000028	100ASA-000-G	4.25	0.500	Blank	-	-	3.125	4	0.625
6000029	100ASA-100-G	4.25	0.500	1.010	.875	.250	3.125	4	0.625
6000030	100ASA-150-G	4.25	0.500	1.510	1.375	.250	3.125	4	0.625

A&N Corporation

707 SW 19th Ave.
Williston, FL 32696
1(800) FLANGE1
FAX (352) 528-3441
www.ancorp.com



100 ASA - Rotatable Flanges

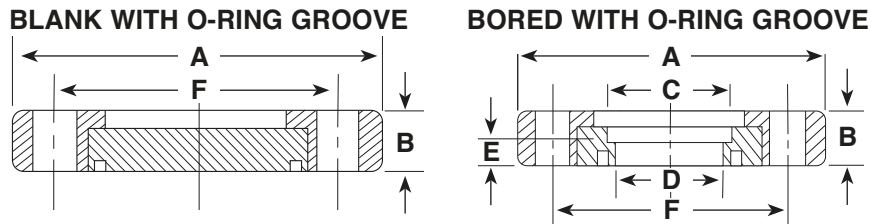


PART NUMBER	REFERENCE NUMBER	OD A	THICKNESS B	BORE C	THRU HOLE D	SETBACK E	BOLT CIRCLE F	BOLT HOLE NO.	BOLT HOLE SIZE
-------------	------------------	------	-------------	--------	-------------	-----------	---------------	---------------	----------------

6000056	100ASA-000-R	4.25	0.500	Blank	-	-	3.125	4	0.625
6000057	100ASA-100-R	4.25	0.500	1.010	.875	.250	3.125	4	0.625
6000058	100ASA-150-R	4.25	0.500	1.510	1.375	.250	3.125	4	0.625



100 ASA - Rotatable, Grooved Flanges



PART NUMBER	REFERENCE NUMBER	OD A	THICKNESS B	BORE C	THRU HOLE D	SETBACK E	BOLT CIRCLE F	BOLT HOLE NO.	BOLT HOLE SIZE
-------------	------------------	------	-------------	--------	-------------	-----------	---------------	---------------	----------------

6000084	100ASA-000-R-G	4.25	0.500	Blank	-	-	3.125	4	0.625
6000085	100ASA-100-R-G	4.25	0.500	1.010	.875	.250	3.125	4	0.625
6000086	100ASA-150-R-G	4.25	0.500	1.510	1.375	.250	3.125	4	0.625



100 ASA Hardware

PART NUMBER	REFERENCE NUMBER	USE WITH FLANGE	DESCRIPTION
-------------	------------------	-----------------	-------------

0600225	100ASA-OV	100ASA	(1) Viton® O-ring
0606500	100ASA-BK	100ASA	(4) Bolt, Nut & Washer Kit; 9/16-12x1 1/2 in.



150 ASA - 5.00 inch O.D.

Product Features:

- Designed to fit standard inch tubing O.D.'s
- Self-aligning
- Internal weld
- Rotatable flanges for easier bolt hole alignment
- Blank flanges to close unused ports or custom modify
- Interchangeable with other ASA/ANSI style flanges
- Adapters to other flange systems available see section 8

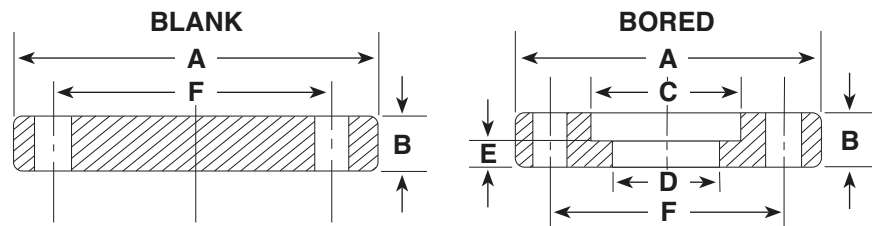
Product Specifications

- Pressure range: HV (approx. 1×10^{-8} Torr)
- Temperature range: -20°C up to 200°C
- Standard materials: 304 grade stainless steel

Options: Call for price and availability



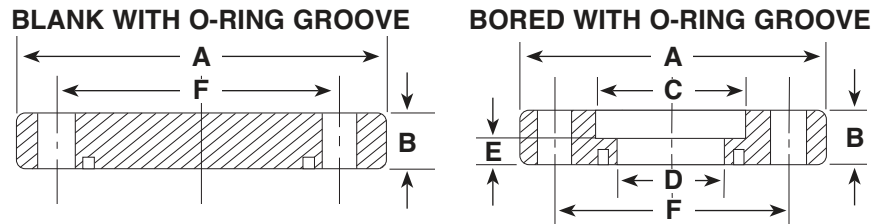
150 ASA - Fixed Flanges



PART NUMBER	REFERENCE NUMBER	OD A	THICKNESS B	BORE C	THRU HOLE D	SETBACK E	BOLT CIRCLE F	BOLT HOLE NO.	BOLT HOLE SIZE
6000003	150ASA-000	5.00	0.500	Blank	-	-	3.880	4	0.625
6000004	150ASA-150	5.00	0.500	1.510	1.375	0.250	3.880	4	0.625
6000005	150ASA-200	5.00	0.500	2.010	1.875	0.250	3.880	4	0.625
6000006	150ASA-250	5.00	0.500	2.510	2.375	0.250	3.880	4	0.625



150 ASA - Fixed, Grooved Flanges



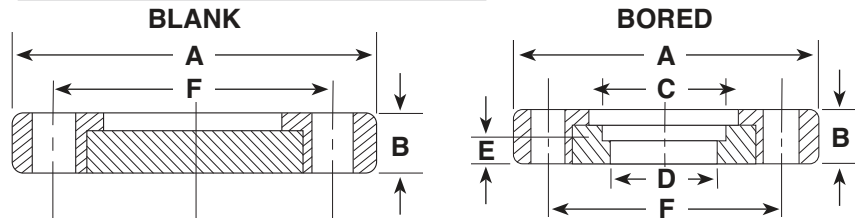
PART NUMBER	REFERENCE NUMBER	OD A	THICKNESS B	BORE C	THRU HOLE D	SETBACK E	BOLT CIRCLE F	BOLT HOLE NO.	BOLT HOLE SIZE
6000031	150ASA-000-G	5.00	0.500	Blank	-	-	3.880	4	0.625
6000032	150ASA-150-G	5.00	0.500	1.510	1.375	0.250	3.880	4	0.625
6000033	150ASA-200-G	5.00	0.500	2.010	1.875	0.250	3.880	4	0.625
6000034	150ASA-250-G	5.00	0.500	2.510	2.375	0.250	3.880	4	0.625

A&N Corporation

707 SW 19th Ave.
Williston, FL 32696
1(800) FLANGE1
FAX (352) 528-3441
www.ancorp.com



150 ASA - Rotatable Flanges

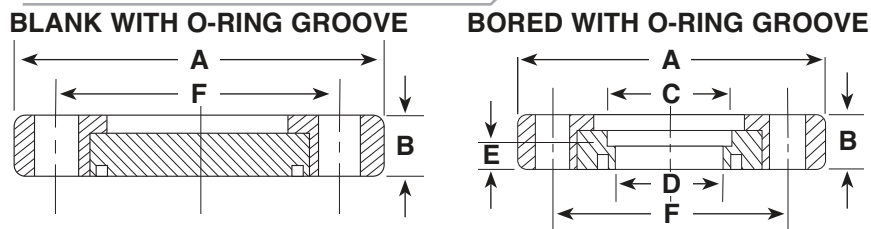


PART NUMBER	REFERENCE NUMBER	OD A	THICKNESS B	BORE C	THRU HOLE D	SETBACK E	BOLT CIRCLE F	BOLT HOLE NO.	BOLT HOLE SIZE
-------------	------------------	------	-------------	--------	-------------	-----------	---------------	---------------	----------------

6000059	150ASA-000-R	5.00	0.500	Blank	-	-	3.880	4	0.625
6000060	150ASA-150-R	5.00	0.500	1.510	1.375	0.250	3.880	4	0.625
6000061	150ASA-200-R	5.00	0.500	2.010	1.875	0.250	3.880	4	0.625
6000062	150ASA-250-R	5.00	0.500	2.510	2.375	0.250	3.880	4	0.625



150 ASA - Rotatable, Grooved Flanges



PART NUMBER	REFERENCE NUMBER	OD A	THICKNESS B	BORE C	THRU HOLE D	SETBACK E	BOLT CIRCLE F	BOLT HOLE NO.	BOLT HOLE SIZE
-------------	------------------	------	-------------	--------	-------------	-----------	---------------	---------------	----------------

6000087	150ASA-000-R-G	5.00	0.500	Blank	-	-	3.880	4	0.625
6000088	150ASA-150-R-G	5.00	0.500	1.510	1.375	0.250	3.880	4	0.625
6000089	150ASA-200-R-G	5.00	0.500	2.010	1.875	0.250	3.880	4	0.625
6000090	150ASA-250-R-G	5.00	0.500	2.510	2.375	0.250	3.880	4	0.625



150 ASA Hardware

PART NUMBER	REFERENCE NUMBER	USE WITH FLANGE	DESCRIPTION
-------------	------------------	-----------------	-------------

0600230	150ASA-OV	150ASA	(1) Viton® O-ring
0606501	150ASA-BK	150ASA	(4) Bolt, Nut & Washer Kit; 9/16-12x1 1/2 in.



200 ASA - 6.00 inch O.D.

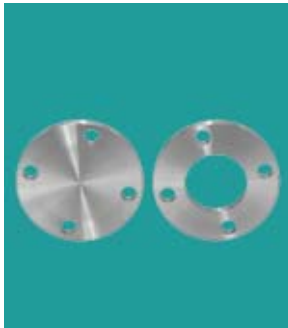
Product Features:

- Designed to fit standard inch tubing O.D.'s
- Self-aligning
- Internal weld
- Rotatable flanges for easier bolt hole alignment
- Blank flanges to close unused ports or custom modify
- Interchangeable with other ASA/ANSI style flanges
- Adapters to other flange systems available see section 8

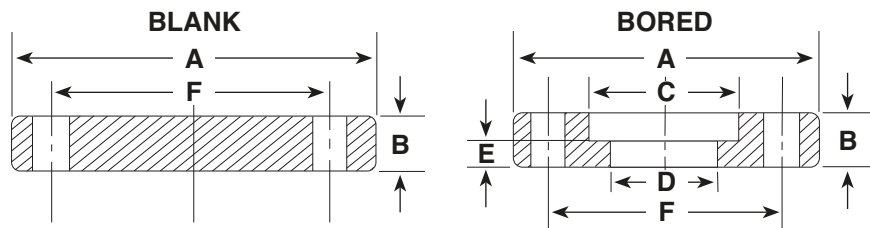
Product Specifications

- Pressure range: HV (approx. 1×10^{-8} Torr)
- Temperature range: -20°C up to 200°C
- Standard materials: 304 grade stainless steel

Options: Call for price and availability



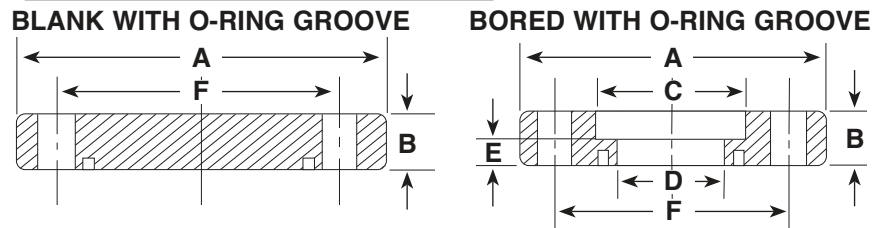
200 ASA - Fixed Flanges



PART NUMBER	REFERENCE NUMBER	OD A	THICKNESS B	BORE C	THRU HOLE D	SETBACK E	BOLT CIRCLE F	BOLT HOLE NO.	BOLT HOLE SIZE
6000007	200ASA-000	6.00	0.500	Blank	-	-	4.750	4	0.750
6000008	200ASA-200	6.00	0.500	2.010	1.875	0.250	4.750	4	0.750
6000009	200ASA-250	6.00	0.500	2.510	2.375	0.250	4.750	4	0.750
6000010	200ASA-300	6.00	0.500	3.010	2.938	0.250	4.750	4	0.750
6000011	200ASA-350	6.00	0.500	3.510	3.438	0.250	4.750	4	0.750



200 ASA - Fixed, Grooved Flanges



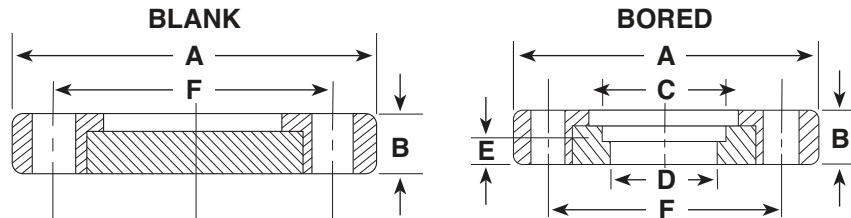
PART NUMBER	REFERENCE NUMBER	OD A	THICKNESS B	BORE C	THRU HOLE D	SETBACK E	BOLT CIRCLE F	BOLT HOLE NO.	BOLT HOLE SIZE
6000035	200ASA-000-G	6.00	0.500	Blank	-	-	4.750	4	0.750
6000036	200ASA-200-G	6.00	0.500	2.010	1.875	0.250	4.750	4	0.750
6000037	200ASA-250-G	6.00	0.500	2.510	2.375	0.250	4.750	4	0.750
6000038	200ASA-300-G	6.00	0.500	3.010	2.938	0.250	4.750	4	0.750
6000039	200ASA-350-G	6.00	0.500	3.510	3.438	0.250	4.750	4	0.750

A&N Corporation

707 SW 19th Ave.
Williston, FL 32696
1(800) FLANGE1
FAX (352) 528-3441
www.ancorp.com



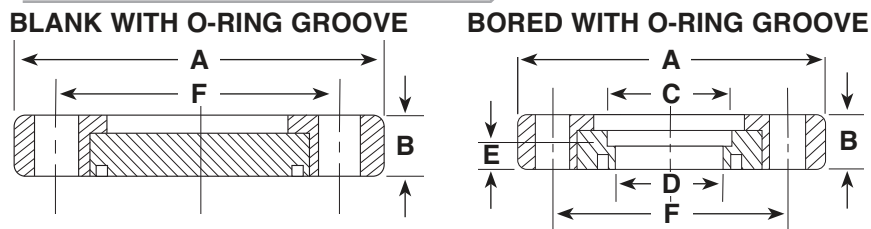
200 ASA - Rotatable Flanges



PART NUMBER	REFERENCE NUMBER	OD A	THICKNESS B	BORE C	THRU HOLE D	SETBACK E	BOLT CIRCLE F	BOLT HOLE NO.	BOLT HOLE SIZE
6000063	200ASA-000-R	6.00	0.500	Blank	-	-	4.750	4	0.750
6000064	200ASA-200-R	6.00	0.500	2.010	1.875	0.250	4.750	4	0.750
6000065	200ASA-250-R	6.00	0.500	2.510	2.375	0.250	4.750	4	0.750
6000066	200ASA-300-R	6.00	0.500	3.010	2.938	0.250	4.750	4	0.750
6000067	200ASA-350-R	6.00	0.500	3.510	3.438	0.250	4.750	4	0.750



200 ASA - Rotatable, Grooved Flanges



PART NUMBER	REFERENCE NUMBER	OD A	THICKNESS B	BORE C	THRU HOLE D	SETBACK E	BOLT CIRCLE F	BOLT HOLE NO.	BOLT HOLE SIZE
6000091	200ASA-000-R-G	6.00	0.500	Blank	-	-	4.750	4	0.750
6000092	200ASA-200-R-G	6.00	0.500	2.010	1.875	0.250	4.750	4	0.750
6000093	200ASA-250-R-G	6.00	0.500	2.510	2.375	0.250	4.750	4	0.750
6000094	200ASA-300-R-G	6.00	0.500	3.010	2.938	0.250	4.750	4	0.750
6000095	200ASA-350-R-G	6.00	0.500	3.510	3.438	0.250	4.750	4	0.750



200 ASA Hardware

PART NUMBER	REFERENCE NUMBER	USE WITH FLANGE	DESCRIPTION
0600238	200ASA-OV	200ASA	(1) Viton® O-ring
0606502	200ASA-BK	200ASA	(4) Bolt, Nut & Washer Kit; 5/8-11x1 1/2 in.



300 ASA - 7.50 inch O.D.

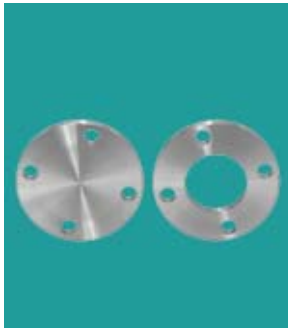
Product Features:

- Designed to fit standard inch tubing O.D.'s
- Self-aligning
- Internal weld
- Rotatable flanges for easier bolt hole alignment
- Blank flanges to close unused ports or custom modify
- Interchangeable with other ASA/ANSI style flanges
- Adapters to other flange systems available see section 8

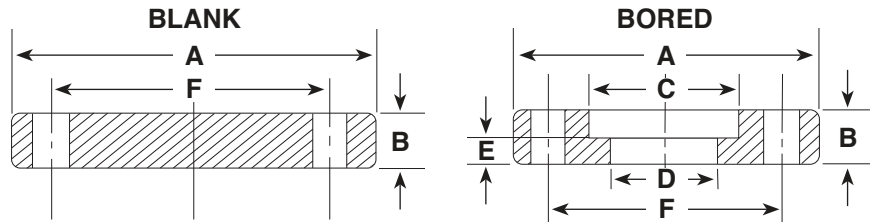
Product Specifications

- Pressure range: HV (approx. 1×10^{-8} Torr)
- Temperature range: -20°C up to 200°C
- Standard materials: 304 grade stainless steel

Options: Call for price and availability



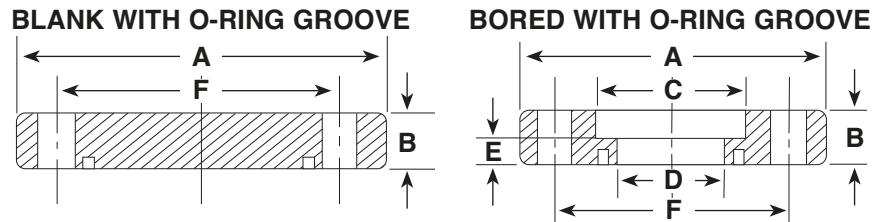
300 ASA - Fixed Flanges



PART NUMBER	REFERENCE NUMBER	OD A	THICKNESS B	BORE C	THRU HOLE D	SETBACK E	BOLT CIRCLE F	BOLT HOLE NO.	BOLT HOLE SIZE
6000012	300ASA-000	7.50	0.500	Blank	-	-	6.000	4	0.750
6000013	300ASA-300	7.50	0.500	3.010	2.938	0.250	6.000	4	0.750
6000014	300ASA-350	7.50	0.500	3.510	3.438	0.250	6.000	4	0.750
6000015	300ASA-400	7.50	0.500	4.010	3.910	0.250	6.000	4	0.750



300 ASA - Fixed, Grooved Flanges



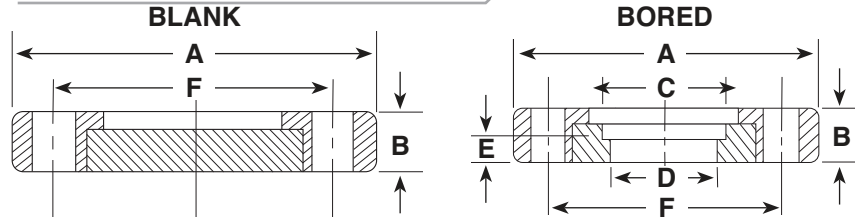
PART NUMBER	REFERENCE NUMBER	OD A	THICKNESS B	BORE C	THRU HOLE D	SETBACK E	BOLT CIRCLE F	BOLT HOLE NO.	BOLT HOLE SIZE
6000040	300ASA-000-G	7.50	0.500	Blank	-	-	6.000	4	0.750
6000041	300ASA-300-G	7.50	0.500	3.010	2.938	0.250	6.000	4	0.750
6000042	300ASA-350-G	7.50	0.500	3.510	3.438	0.250	6.000	4	0.750
6000043	300ASA-400-G	7.50	0.500	4.010	3.910	0.250	6.000	4	0.750

A&N Corporation

707 SW 19th Ave.
Williston, FL 32696
1(800) FLANGE1
FAX (352) 528-3441
www.ancorp.com



300 ASA - Rotatable Flanges

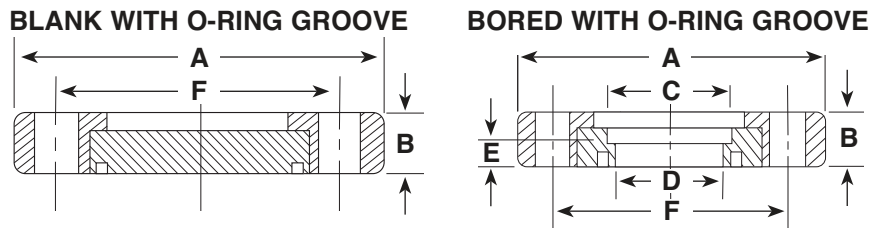


PART NUMBER	REFERENCE NUMBER	OD A	THICKNESS B	BORE C	THRU HOLE D	SETBACK E	BOLT CIRCLE F	BOLT HOLE NO.	BOLT HOLE SIZE
-------------	------------------	------	-------------	--------	-------------	-----------	---------------	---------------	----------------

6000068	300ASA-000-R	7.50	0.500	Blank	-	-	6.000	4	0.750
6000069	300ASA-300-R	7.50	0.500	3.010	2.938	0.250	6.000	4	0.750
6000070	300ASA-350-R	7.50	0.500	3.510	3.438	0.250	6.000	4	0.750
6000071	300ASA-400-R	7.50	0.500	4.010	3.910	0.250	6.000	4	0.750



300 ASA - Rotatable, Grooved Flanges



PART NUMBER	REFERENCE NUMBER	OD A	THICKNESS B	BORE C	THRU HOLE D	SETBACK E	BOLT CIRCLE F	BOLT HOLE NO.	BOLT HOLE SIZE
-------------	------------------	------	-------------	--------	-------------	-----------	---------------	---------------	----------------

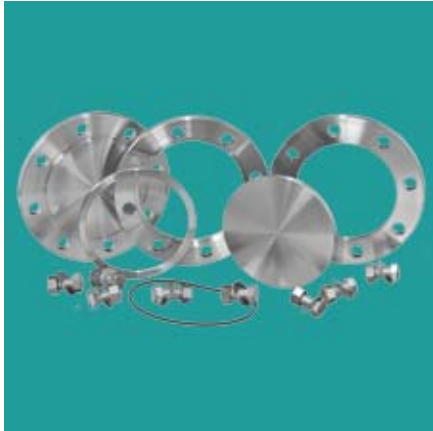
6000096	300ASA-000-R-G	7.50	0.500	Blank	-	-	6.000	4	0.750
6000097	300ASA-300-R-G	7.50	0.500	3.010	2.938	0.250	6.000	4	0.750
6000098	300ASA-350-R-G	7.50	0.500	3.510	3.438	0.250	6.000	4	0.750
6000099	300ASA-400-R-G	7.50	0.500	4.010	3.910	0.250	6.000	4	0.750



300 ASA Hardware

PART NUMBER	REFERENCE NUMBER	USE WITH FLANGE	DESCRIPTION
-------------	------------------	-----------------	-------------

0600247	300ASA-OV	300ASA	(1) Viton® O-ring
0606503	300ASA-BK	300ASA	(4) Bolt, Nut & Washer Kit; 5/8-11x1 1/2 in.



400 ASA - 9.00 inch O.D.

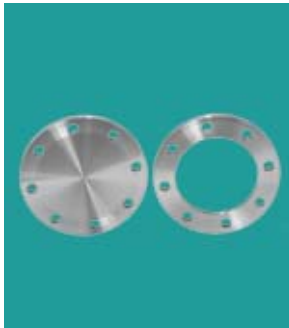
Product Features:

- Designed to fit standard inch tubing O.D.'s
- Self-aligning
- Internal weld
- Rotatable flanges for easier bolt hole alignment
- Blank flanges to close unused ports or custom modify
- Interchangeable with /ANSI style flanges
- Adapters to other flange systems available see section 8

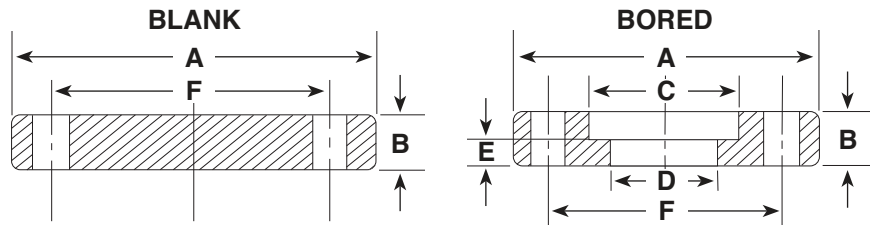
Product Specifications

- Pressure range: HV (approx. 1×10^{-8} Torr)
- Temperature range: -20°C up to 200°C
- Standard materials: 304 grade stainless steel

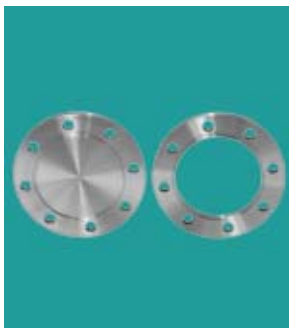
Options: Call for price and availability



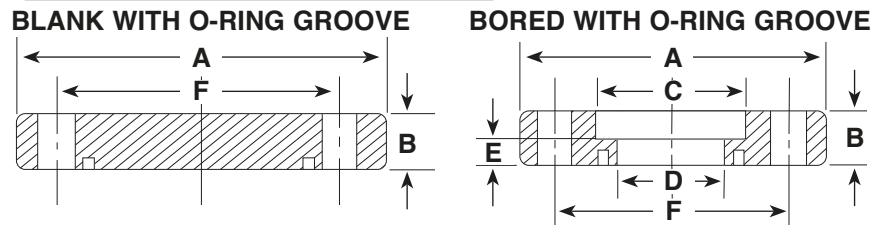
400 ASA - Fixed Flanges



PART NUMBER	REFERENCE NUMBER	OD A	THICKNESS B	BORE C	THRU HOLE D	SETBACK E	BOLT CIRCLE F	BOLT HOLE NO.	BOLT HOLE SIZE
6000016	400ASA-000	9.00	0.500	Blank	-	-	7.500	8	0.750
6000017	400ASA-400	9.00	0.500	4.010	3.910	0.250	7.500	8	0.750
6000018	400ASA-600	9.00	0.500	6.020	5.875	0.250	7.500	8	0.750



400 ASA - Fixed, Grooved Flanges



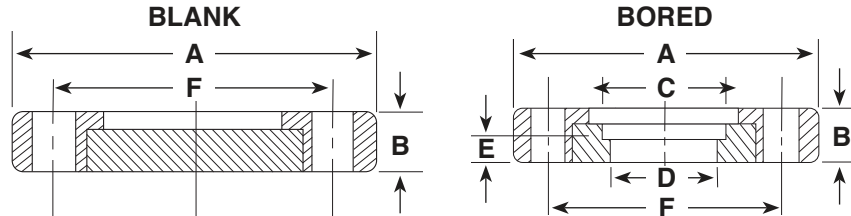
PART NUMBER	REFERENCE NUMBER	OD A	THICKNESS B	BORE C	THRU HOLE D	SETBACK E	BOLT CIRCLE F	BOLT HOLE NO.	BOLT HOLE SIZE
6000044	400ASA-000-G	9.00	0.500	Blank	-	-	7.500	8	0.750
6000045	400ASA-400-G	9.00	0.500	4.010	3.910	0.250	7.500	8	0.750
6000046	400ASA-600-G	9.00	0.500	6.020	5.875	0.250	7.500	8	0.750

A&N Corporation

707 SW 19th Ave.
Williston, FL 32696
1(800) FLANGE1
FAX (352) 528-3441
www.ancorp.com



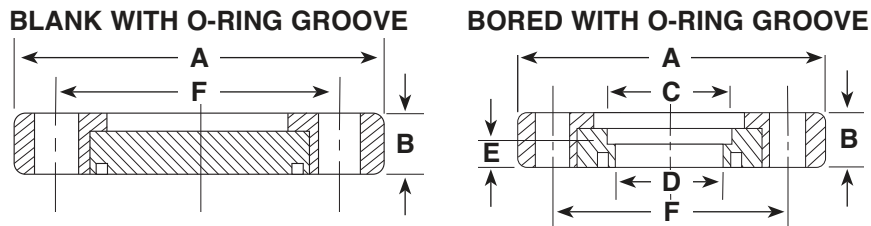
400 ASA - Rotatable Flanges



PART NUMBER	REFERENCE NUMBER	OD A	THICKNESS B	BORE C	THRU HOLE D	SETBACK E	BOLT CIRCLE F	BOLT HOLE NO.	BOLT HOLE SIZE
6000072	400ASA-000-R	9.00	0.500	Blank	-	-	7.500	8	0.750
6000073	400ASA-400-R	9.00	0.500	4.010	3.910	0.250	7.500	8	0.750
6000074	400ASA-600-R	9.00	0.500	6.020	5.875	0.250	7.500	8	0.750



400 ASA - Rotatable, Grooved Flanges

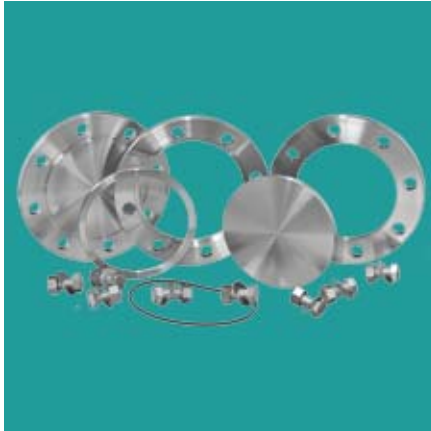


PART NUMBER	REFERENCE NUMBER	OD A	THICKNESS B	BORE C	THRU HOLE D	SETBACK E	BOLT CIRCLE F	BOLT HOLE NO.	BOLT HOLE SIZE
6000100	400ASA-000-R-G	9.00	0.500	Blank	-	-	7.500	8	0.750
6000101	400ASA-400-R-G	9.00	0.500	4.010	3.910	0.250	7.500	8	0.750
6000102	400ASA-600-R-G	9.00	0.500	6.020	5.875	0.250	7.500	8	0.750



400 ASA Hardware

PART NUMBER	REFERENCE NUMBER	USE WITH FLANGE	DESCRIPTION
0600258	400ASA-OV	400ASA	(1) Viton® O-ring
0606504	400ASA-BK	400ASA	(8) Bolt, Nut & Washer Kit; 5/8-11x1 1/2 in.



600 ASA - 11.00 inch O.D.

Product Features:

- Designed to fit standard inch tubing O.D.'s
- Self-aligning
- Internal weld
- Rotatable flanges for easier bolt hole alignment
- Blank flanges to close unused ports or custom modify
- Interchangeable with other ASA/ANSI style flanges
- Adapters to other flange systems available see section 8

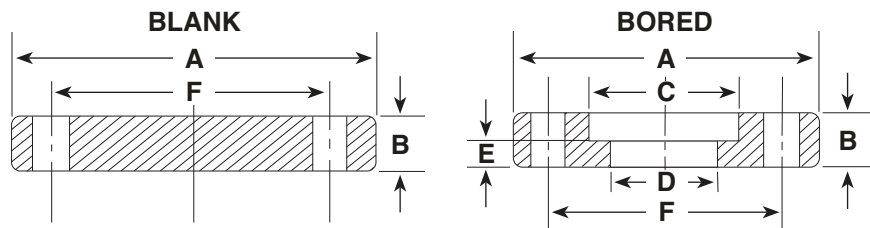
Product Specifications

- Pressure range: HV (approx. 1×10^{-8} Torr)
- Temperature range: -20°C up to 200°C
- Standard materials: 304 grade stainless steel

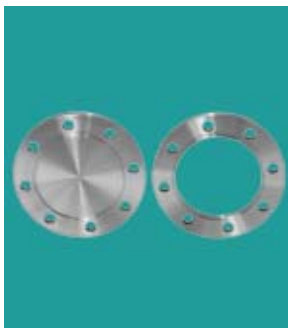
Options: Call for price and availability



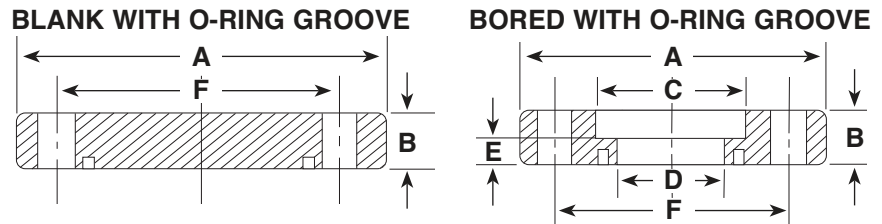
600 ASA - Fixed Flanges



PART NUMBER	REFERENCE NUMBER	OD A	THICKNESS B	BORE C	THRU HOLE D	SETBACK E	BOLT CIRCLE F	BOLT HOLE NO.	BOLT HOLE SIZE
6000019	600ASA-000	11.00	0.750	Blank	-	-	9.500	8	0.812
6000020	600ASA-600	11.00	0.750	6.020	5.875	0.375	9.500	8	0.812
6000021	600ASA-800	11.00	0.750	8.020	7.875	0.375	9.500	8	0.812



600 ASA - Fixed, Grooved Flanges



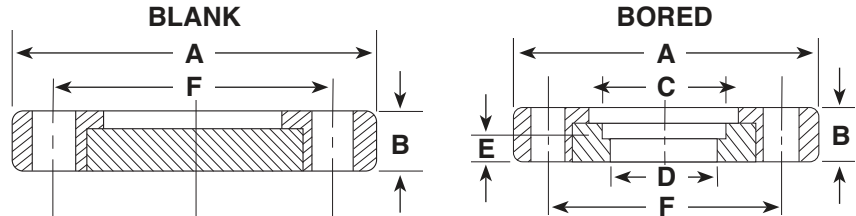
PART NUMBER	REFERENCE NUMBER	OD A	THICKNESS B	BORE C	THRU HOLE D	SETBACK E	BOLT CIRCLE F	BOLT HOLE NO.	BOLT HOLE SIZE
6000047	600ASA-000-G	11.00	0.750	Blank	-	-	9.500	8	0.812
6000048	600ASA-600-G	11.00	0.750	6.020	5.875	0.375	9.500	8	0.812
6000049	600ASA-800-G	11.00	0.750	8.020	7.875	0.375	9.500	8	0.812

A&N Corporation

707 SW 19th Ave.
Williston, FL 32696
1(800) FLANGE1
FAX (352) 528-3441
www.ancorp.com



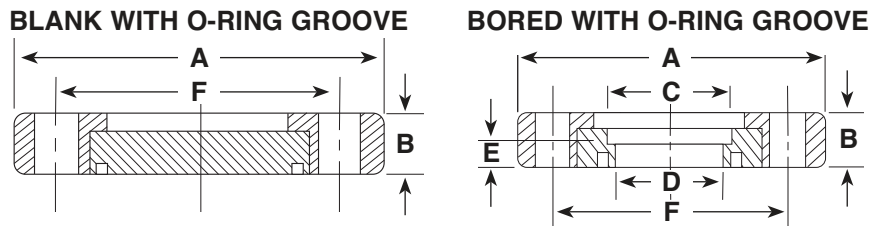
600 ASA - Rotatable Flanges



PART NUMBER	REFERENCE NUMBER	OD A	THICKNESS B	BORE C	THRU HOLE D	SETBACK E	BOLT CIRCLE F	BOLT HOLE NO.	BOLT HOLE SIZE
6000075	600ASA-000-R	11.00	0.750	Blank	-	-	9.500	8	0.812
6000076	600ASA-600-R	11.00	0.750	6.020	5.875	0.375	9.500	8	0.812
6000077	600ASA-800-R	11.00	0.750	8.020	7.875	0.375	9.500	8	0.812



600 ASA - Rotatable, Grooved Flanges

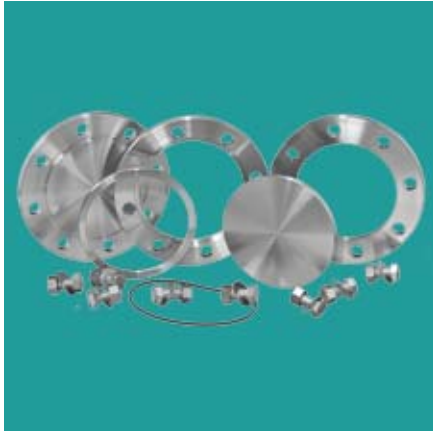


PART NUMBER	REFERENCE NUMBER	OD A	THICKNESS B	BORE C	THRU HOLE D	SETBACK E	BOLT CIRCLE F	BOLT HOLE NO.	BOLT HOLE SIZE
6000103	600ASA-000-R-G	11.00	0.750	Blank	-	-	Bolt Circle	8	0.812
6000104	600ASA-600-R-G	11.00	0.750	6.020	5.875	0.375	Bolt Circle	8	0.812
6000105	600ASA-800-R-G	11.00	0.750	8.020	7.875	0.375	Bolt Circle	8	0.812



600 ASA Hardware

PART NUMBER	REFERENCE NUMBER	USE WITH FLANGE	DESCRIPTION
0600266	600ASA-OV	600ASA	(1) Viton® O-ring
0606505	600ASA-BK	600ASA	(8) Bolt, Nut & Washer Kit; 3/4-10x2 1/4 in.



800 ASA - 13.50 inch O.D.

Product Features:

- Designed to fit standard inch tubing O.D.'s
- Self-aligning
- Internal weld
- Rotatable flanges for easier bolt hole alignment
- Blank flanges to close unused ports or custom modify
- Interchangeable with other ASA/ANSI style flanges
- Adapters to other flange systems available see section 8

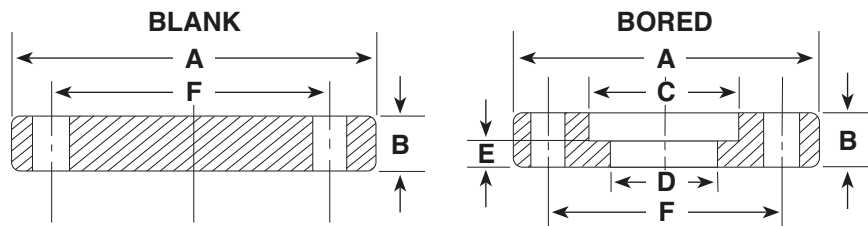
Product Specifications

- Pressure range: HV (approx. 1×10^{-8} Torr)
- Temperature range: -20°C up to 200°C
- Standard materials: 304 grade stainless steel

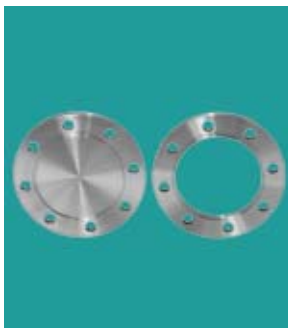
Options: Call for price and availability



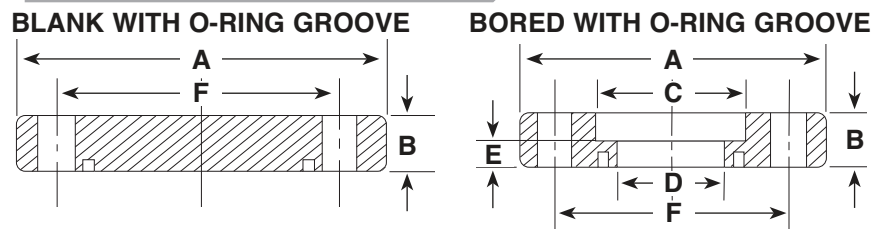
800 ASA - Fixed Flanges



PART NUMBER	REFERENCE NUMBER	OD A	THICKNESS B	BORE C	THRU HOLE D	SETBACK E	BOLT CIRCLE F	BOLT HOLE NO.	BOLT HOLE SIZE
6000022	800ASA-000	13.50	0.750	Blank	Blank	-	11.750	8	0.812
6000023	800ASA-800	13.50	0.750	8.020	8.020	0.375	11.750	8	0.812
6000024	800ASA-1000	13.50	0.750	10.020	10.020	0.375	11.750	8	0.812



800 ASA - Fixed, Grooved Flanges



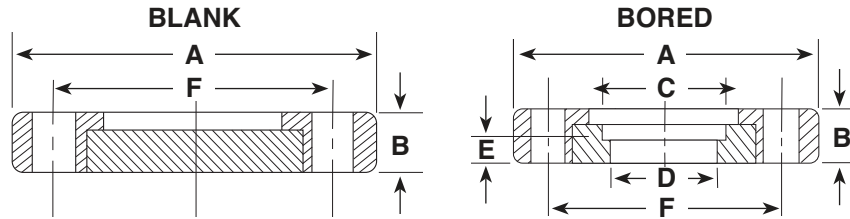
PART NUMBER	REFERENCE NUMBER	OD A	THICKNESS B	BORE C	THRU HOLE D	SETBACK E	BOLT CIRCLE F	BOLT HOLE NO.	BOLT HOLE SIZE
6000050	800ASA-000-G	13.50	0.750	Blank	-	-	11.750	8	0.812
6000051	800ASA-800-G	13.50	0.750	8.020	7.875	0.375	11.750	8	0.812
6000052	800ASA-1000-G	13.50	0.750	10.020	9.875	0.375	11.750	8	0.812

A&N Corporation

707 SW 19th Ave.
Williston, FL 32696
1(800) FLANGE1
FAX (352) 528-3441
www.ancorp.com



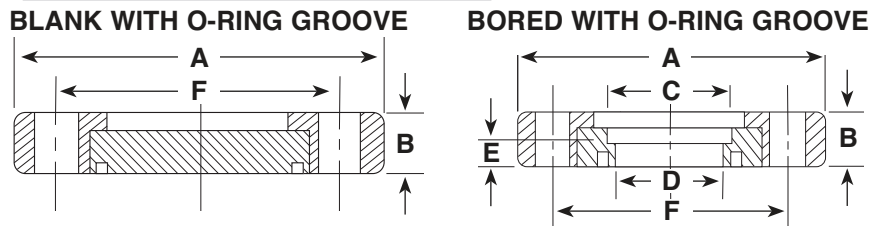
800 ASA - Rotatable Flanges



PART NUMBER	REFERENCE NUMBER	OD A	THICKNESS B	BORE C	THRU HOLE D	SETBACK E	BOLT CIRCLE F	BOLT HOLE NO.	BOLT HOLE SIZE
6000078	800ASA-000-R	13.50	0.750	Blank	-	-	11.750	8	0.812
6000079	800ASA-800-R	13.50	0.750	8.020	7.875	0.375	11.750	8	0.812
6000080	800ASA-1000-R	13.50	0.750	10.020	9.875	0.375	11.750	8	0.812



800 ASA - Rotatable, Grooved Flanges

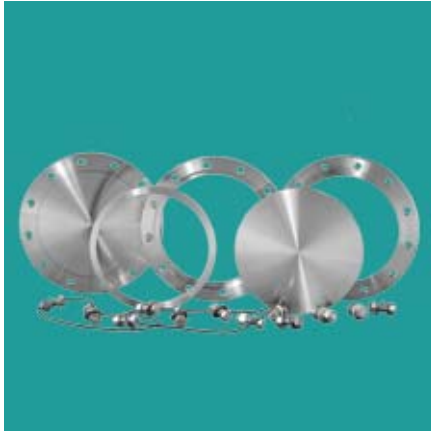


PART NUMBER	REFERENCE NUMBER	OD A	THICKNESS B	BORE C	THRU HOLE D	SETBACK E	BOLT CIRCLE F	BOLT HOLE NO.	BOLT HOLE SIZE
6000106	800ASA-000-R-G	13.50	0.750	Blank	-	-	11.750	8	0.812
6000107	800ASA-800-R-G	13.50	0.750	8.020	7.875	0.375	11.750	8	0.812
6000108	800ASA-1000-R-G	13.50	0.750	10.020	9.875	0.375	11.750	8	0.812



800 ASA Hardware

PART NUMBER	REFERENCE NUMBER	USE WITH FLANGE	DESCRIPTION
0600274	800ASA-OV	800ASA	(1) Viton® O-ring
0606506	800ASA-BK	800ASA	(8) Bolt, Nut & Washer Kit; 3/4-10x2 1/4 in.



1000 ASA - 16.00 inch O.D.

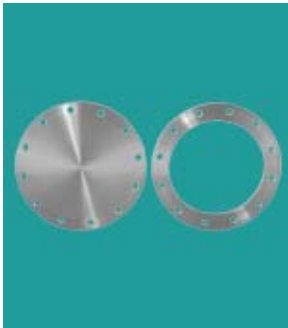
Product Features:

- Designed to fit standard inch tubing O.D.'s
- Self-aligning
- Internal weld
- Rotatable flanges for easier bolt hole alignment
- Blank flanges to close unused ports or custom modify
- Interchangeable with other ASA/ANSI style flanges
- Adapters to other flange systems available see section 8

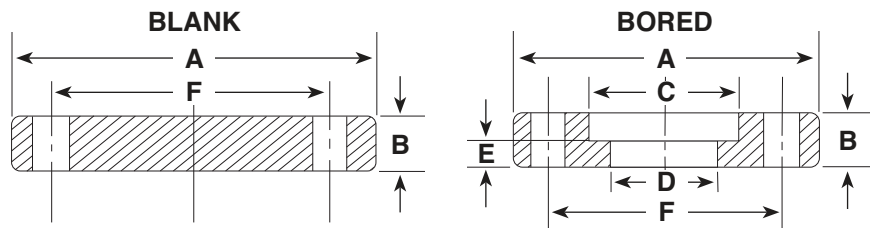
Product Specifications

- Pressure range: HV (approx. 1×10^{-8} Torr)
- Temperature range: -20°C up to 200°C
- Standard materials: 304 grade stainless steel

Options: Call for price and availability



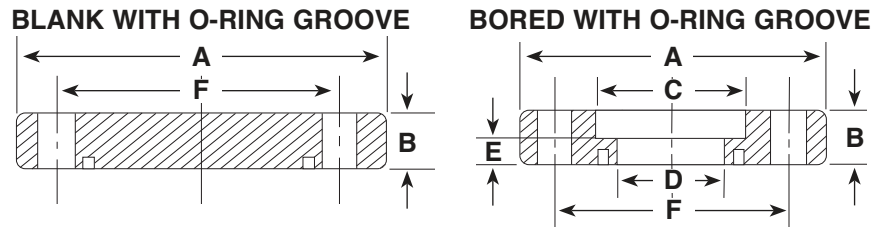
1000 ASA - Fixed Flanges



PART NUMBER	REFERENCE NUMBER	OD A	THICKNESS B	BORE C	THRU HOLE D	SETBACK E	BOLT CIRCLE F	BOLT HOLE NO.	BOLT HOLE SIZE
6000025	1000ASA-000	16.00	0.750	Blank	-	-	14.250	12	0.812
6000026	1000ASA-1000	16.00	0.750	10.020	9.875	0.375	14.250	12	0.812
6000027	1000ASA-1200	16.00	0.750	12.020	11.875	0.375	14.250	12	0.812



1000 ASA - Fixed, Grooved Flanges



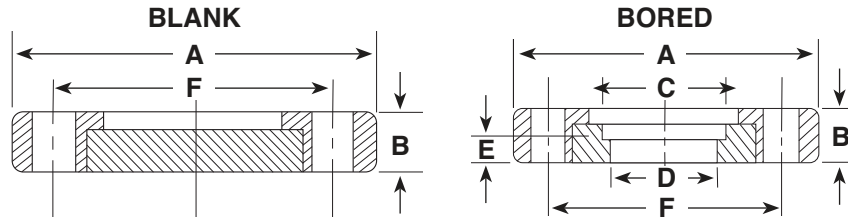
PART NUMBER	REFERENCE NUMBER	OD A	THICKNESS B	BORE C	THRU HOLE D	SETBACK E	BOLT CIRCLE F	BOLT HOLE NO.	BOLT HOLE SIZE
6000053	1000ASA-000-G	16.00	0.750	Blank	-	-	14.250	12	0.812
6000054	1000ASA-1000-G	16.00	0.750	10.020	9.875	0.375	14.250	12	0.812
6000055	1000ASA-1200-G	16.00	0.750	12.020	11.875	0.375	14.250	12	0.812

A&N Corporation

707 SW 19th Ave.
Williston, FL 32696
1(800) FLANGE1
FAX (352) 528-3441
www.ancorp.com



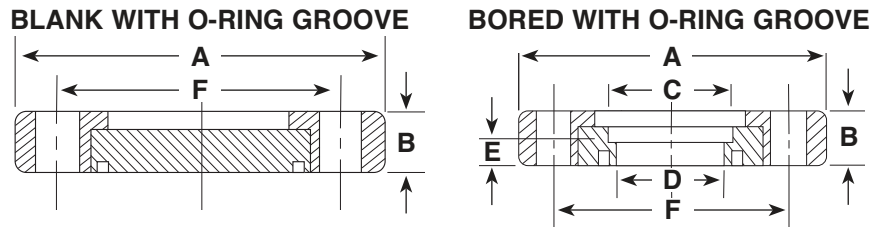
1000 ASA - Rotatable Flanges



PART NUMBER	REFERENCE NUMBER	OD A	THICKNESS B	BORE C	THRU HOLE D	SETBACK E	BOLT CIRCLE F	BOLT HOLE NO.	BOLT HOLE SIZE
6000081	1000ASA-000-R	16.00	0.750	Blank	-	-	14.250	12	0.812
6000082	1000ASA-1000-R	16.00	0.750	10.020	9.875	0.375	14.250	12	0.812
6000083	1000ASA-1200-R	16.00	0.750	12.020	11.875	0.375	14.250	12	0.812



1000 ASA - Rotatable, Grooved Flanges



PART NUMBER	REFERENCE NUMBER	OD A	THICKNESS B	BORE C	THRU HOLE D	SETBACK E	BOLT CIRCLE F	BOLT HOLE NO.	BOLT HOLE SIZE
6000109	1000ASA-000-R-G	16.00	0.750	Blank	-	-	14.250	12	0.812
6000110	1000ASA-1000-R-G	16.00	0.750	10.020	9.875	0.375	14.250	12	0.812
6000111	1000ASA-1200-R-G	16.00	0.750	12.020	11.875	0.375	14.250	12	0.812



1000 ASA Hardware

PART NUMBER	REFERENCE NUMBER	USE WITH FLANGE	DESCRIPTION
0600278	1000ASA-OV	1000ASA	(1) Viton® O-ring
0606507	1000ASA-BK	1000ASA	(12) Bolt, Nut & Washer Kit; 3/4-10x2 1/4 in.



ASA/ANSI Fittings

A&N Corporation's ASA/ANSI fittings make up a complete set of modular components that allow our customers to create a custom vacuum system without the trouble and expense of having in-house machining and welding capabilities.

All A&N Corporation ASA/ANSI fittings are made with flanges manufactured to industry specifications to ensure compatibility with other manufacturer's flanges.



Specifications

- Vacuum rated to 1×10^{-8} Torr.
- Leak rating $< 1 \times 10^{-9}$ std. cc/s helium
- Temperature range: -20°C to 200°C
- Standard sizes: 5 inch to 16 inches O.D.
(for tubing diameter 1 inch up to 12 inches)

Materials:

- Flanges and fittings: 304 stainless steel
- Elastomer seals: Viton[®]

Features

- Reusable flanges
- Rotatable flanges for easier bolt hole alignment
- Adapters to other flange systems available
- Interchangeable with other ASA/ANSI style flanges made to industry standards



For More Info...

*7 See pg. 6.28 & 6.29 for sizes and additional details

*8 See pg. 6.30 - 6.35 for sizes and additional details

Half Nipples

These fittings are manufactured with a flange on one end and raw tubing on the other. Half nipples are often welded onto a custom vacuum system or instrument by a customer with in-house welding capabilities. However, these fittings can also be used with quick connect compression fittings to make a vacuum tight connection without welding (see section 7 for our selection of quick disconnect compression fittings). A&N manufactures standard half nipples in 304 stainless steel, other materials are available on request.*7



Nipples

These fittings are manufactured with a flange on each end of a straight section of tubing. Nipples are used to create a weld free straight connection within a vacuum system. Nipples are also used as straight adapters between different tubing sizes or flange types. These fittings are available in all ASA/ANSI sizes and flange types. A&N manufactures standard nipples in 304 stainless steel, other materials are available on request.*8

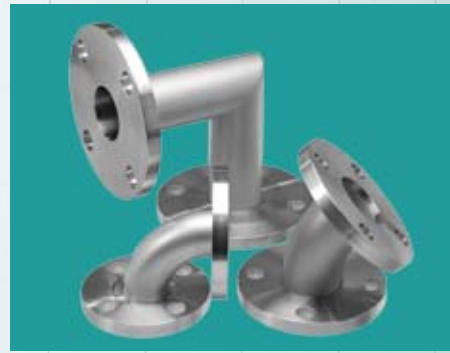


A&N Corporation

707 SW 19th Ave.
Williston, FL 32696
1(800) FLANGE1
FAX (352) 528-3441
www.ancorp.com

Elbows

These fittings are manufactured with a flange on each end of a curved section of tubing. Elbows accommodate turns or alignment considerations for vacuum system design. Elbows are offered in 3 designs: 45° radius elbow, 90° radius elbow and 90° mitered elbow to accommodate a wide variety of system configurations. A&N manufactures standard elbows in 304 stainless steel, other materials are available on request.*⁹



* ORDERING NOTE

There are two terms used within this catalog that require specific definition.

Reducer fittings are used to reduce the size of flanges and tubing used within the same flange family. For example, CF600 to CF275 or ISO-LF63 to ISO-QF40. These products are listed with the fittings components for that flange family.

Tees

These fittings are manufactured with a flange on each end of a “T” shaped section of tubing. Tees accommodate junctions or alignment considerations for vacuum system design. Tees are also used as junction adapters between different tubing sizes or flange types. A&N manufactures standard tees in 304 stainless steel, other materials are available on request.*¹⁰



Adapter fittings are used to change from one family of flanges to another. For example, ISO-QF25 to CF275. For these products see Section 8: Hybrid Adapters

Crosses

These fittings are manufactured with a flange on each end of an “X” shaped section of tubing. Crosses accommodate junctions or alignment considerations for vacuum system design. Crosses are also used as junction adapters between different tubing sizes or flange types. A&N manufactures standard crosses in 304 stainless steel, other materials are available on request.*¹¹



5-way and 6-way Crosses and Cubes

These fittings are manufactured with a flange on each end of a 5 or 6 sided tubing junction. These crosses accommodate complex junctions or alignment considerations for vacuum system design. Larger sizes are sometimes used as the starting point of a simple vacuum chamber design. A&N manufactures standard 5 and 6-way crosses and cubes in 304 stainless steel, other materials are available on request.*¹²



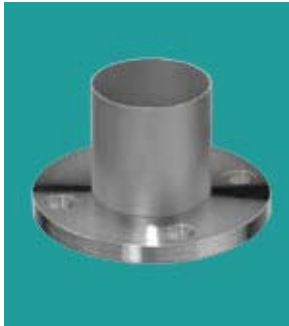
For More Info...

*⁹ See pg. 6.36 - 6.41 for sizes and additional details

*¹⁰ See pg. 6.42 - 6.43 for sizes and additional details

*¹¹ See pg. 6.44 - 6.45 for sizes and additional details

*¹² See pg. 6.46 - 6.49 for sizes and additional details



Half Nipples - Fixed Flange

Materials:

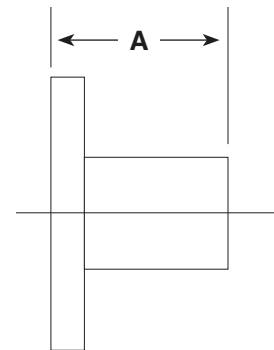
- 304 stainless steel

Product Notes

- Clearance bolt holes
- Butt weld
- Designed to fit standard inch tubing O.D.'S
- Highly customizable - o-ring groove available (see chart below)

Options: Call for price and delivery

- Custom lengths



PART NUMBER	REFERENCE NUMBER	FLANGE O.D.	TUBE O.D.	TUBE WALL THICKNESS	A
6000148	100ASA-100-LF	4.25	1.00	0.065	3.25
6000149	100ASA-150-LF	4.25	1.50	0.065	3.25
6000150	150ASA-150-LF	5.00	1.50	0.065	3.25
6000151	150ASA-200-LF	5.00	2.00	0.065	3.25
6000152	150ASA-250-LF	5.00	2.50	0.065	3.25
6000153	200ASA-200-LF	6.00	2.00	0.065	3.50
6000154	200ASA-250-LF	6.00	2.50	0.065	3.50
6000155	200ASA-300-LF	6.00	3.00	0.065	3.50
6000156	300ASA-300-LF	7.50	3.00	0.065	4.13
6000157	300ASA-400-LF	7.50	4.00	0.083	4.13
6000158	400ASA-400-LF	9.00	4.00	0.083	4.13
6000159	400ASA-600-LF	9.00	6.00	0.083	5.25
6000160	600ASA-600-LF	11.00	6.00	0.083	5.38
6000161	600ASA-800-LF	11.00	8.00	0.120	7.38
6000162	800ASA-800-LF	13.50	8.00	0.120	7.75
6000163	800ASA-1000-LF	13.50	10.00	0.120	9.88
6000164	1000ASA-1000-LF	16.00	10.00	0.120	9.88
6000165	1000ASA-1200-LF	16.00	12.00	0.120	9.88

*** ORDERING NOTE**

This listing is for fixed ASA/ANSI flange half nipples. For rotatable half nipples see pg. 6.29

O-ring Groove Option

FLANGE SIZE PER. FLANGE	ADDITIONAL COST
100ASA	\$ 20.00
150ASA	\$ 20.00
200ASA	\$ 20.00
300ASA	\$ 35.00
400ASA	\$ 35.00
600ASA	\$ 50.00
800ASA	\$ 55.00
1000ASA	\$ 60.00

A&N ASA/ANSI flanged fittings come standard with a smooth flange face. The addition of an o-ring groove is a standard option. If you require a grooved flange the additional charge for this is detailed in this chart.

Please Note: Adding a groove is customizing this product and is no longer returnable.

- For this option add a "-G" to the reference number.

A&N Corporation

707 SW 19th Ave.
Williston, FL 32696
1(800) FLANGE1
FAX (352) 528-3441
www.ancorp.com



Half Nipple - Rotatable Flange

Materials:

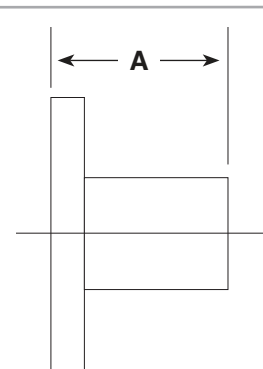
- 304 stainless steel

Product Notes

- Butt weld
- Designed to fit standard inch tubing O.D.'S
- Highly customizable
- o-ring groove available (see chart below)

Options: Call for price and delivery

- Custom lengths



PART NUMBER	REFERENCE NUMBER	FLANGE O.D.	TUBE O.D.	TUBE WALL THICKNESS	A
6000184	100ASA-100-LF-R	4.25	1.00	0.065	3.25
6000185	100ASA-150-LF-R	4.25	1.50	0.065	3.25
6000186	150ASA-150-LF-R	5.00	1.50	0.065	3.25
6000187	150ASA-200-LF-R	5.00	2.00	0.065	3.25
6000188	150ASA-250-LF-R	5.00	2.50	0.065	3.25
6000189	200ASA-200-LF-R	6.00	2.00	0.065	3.50
6000190	200ASA-250-LF-R	6.00	2.50	0.065	3.50
6000191	200ASA-300-LF-R	6.00	3.00	0.065	3.50
6000192	300ASA-300-LF-R	7.50	3.00	0.065	4.13
6000193	300ASA-400-LF-R	7.50	4.00	0.083	4.13
6000194	400ASA-400-LF-R	9.00	4.00	0.083	4.13
6000195	400ASA-600-LF-R	9.00	6.00	0.083	5.25
6000196	600ASA-600-LF-R	11.00	6.00	0.083	5.38
6000197	600ASA-800-LF-R	11.00	8.00	0.120	7.38
6000198	800ASA-800-LF-R	13.50	8.00	0.120	7.75
6000199	800ASA-1000-LF-R	13.50	10.00	0.120	9.88
6000200	1000ASA-1000-LF-R	16.00	10.00	0.120	9.88
6000201	1000ASA-1200-LF-R	16.00	12.00	0.120	9.88

O-ring Groove Option

FLANGE SIZE PER. FLANGE	ADDITIONAL COST
100ASA	\$ 20.00
150ASA	\$ 20.00
200ASA	\$ 20.00
300ASA	\$ 35.00
400ASA	\$ 35.00
600ASA	\$ 50.00
800ASA	\$ 55.00
1000ASA	\$ 60.00

A&N ASA/ANSI flanged fittings come standard with a smooth flange face. The addition of an o-ring groove is a standard option. If you require a grooved flange the additional charge for this is detailed in this chart.

Please Note: Adding a groove is customizing this product and is no longer returnable.

- For this option add a "-G" to the reference number.

* ORDERING NOTE

This listing is for rotatable ASA/ANSI flange half nipples. For fixed half nipples see pg. 6.28



Nipple - Fixed Flanges

Materials

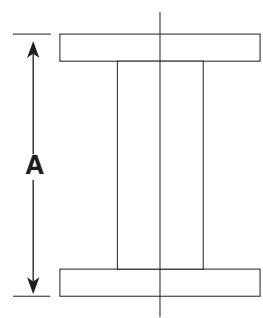
- 304 stainless steel

Product Notes

- Same size flange on both ends
- Both flanges have a fixed bolt hole orientation
- Highly customizable
 - o-ring groove available (see chart below)

Options: Call for price and delivery

- Custom lengths
- Custom flange combinations



PART NUMBER	REFERENCE NUMBER	FLANGE O. D.	TUBE O. D.	A
6000220	100ASA-100-NS	4.25	1.00	6.50
6000221	100ASA-150-NS	4.25	1.50	6.50
6000222	100ASA-150-NL	4.25	1.50	8.00
6000223	150ASA-150-NS	5.00	1.50	6.50
6000224	150ASA-200-NS	5.00	2.00	6.50
6000225	150ASA-250-NS	5.00	2.50	6.50
6000226	150ASA-250-NL	5.00	2.50	8.00
6000227	200ASA-200-NS	6.00	2.00	7.00
6000228	200ASA-250-NS	6.00	2.50	7.00
6000229	200ASA-300-NS	6.00	3.00	7.00
6000230	200ASA-300-NL	6.00	3.00	8.50
6000231	300ASA-300-NS	7.50	3.00	8.26
6000232	300ASA-300-NL	7.50	3.00	9.75
6000233	300ASA-400-NS	7.50	4.00	8.26
6000234	300ASA-400-NL	7.50	4.00	10.24
6000235	400ASA-400-NS	9.00	4.00	8.26
6000236	400ASA-400-NL	9.00	4.00	10.24
6000237	400ASA-600-NS	9.00	6.00	10.50
6000238	400ASA-600-NL	9.00	6.00	12.62
6000239	600ASA-600-NS	11.00	6.00	10.76
6000240	600ASA-600-NL	11.00	6.00	12.88
6000241	600ASA-800-NS	11.00	8.00	10.76
6000242	600ASA-800-NL	11.00	8.00	14.76
6000243	800ASA-800-NL	13.50	8.00	15.50
6000244	800ASA-1000-NL	13.50	10.00	19.76
6000245	1000ASA-1000-NL	16.00	10.00	19.76
6000246	1000ASA-1200-NL	16.00	12.00	19.76

*** ORDERING NOTE**

Reducer nipple fittings are available on pg. 6.34 - 6.35

O-ring Groove Option

FLANGE SIZE PER. FLANGE	ADDITIONAL COST
100ASA	\$ 20.00
150ASA	\$ 20.00
200ASA	\$ 20.00
300ASA	\$ 35.00
400ASA	\$ 35.00
600ASA	\$ 50.00
800ASA	\$ 55.00
1000ASA	\$ 60.00

A&N ASA/ANSI flanged fittings come standard with a smooth flange face. The addition of an o-ring groove is a standard option. If you require a grooved flange the additional charge for this is detailed in this chart.

Let us know which flange(s) to add the groove to by referencing the reference number addition list below.

Please Note: Adding a groove is customizing this product and is no longer returnable.

- Add to the end of the reference number:
 - "-G1" Groove Flange 1
 - "-G1/2" Groove both Flanges

A&N Corporation

707 SW 19th Ave.
Williston, FL 32696
1(800) FLANGE1
FAX (352) 528-3441
www.ancorp.com



Nipple - Rotatable Flange

Materials

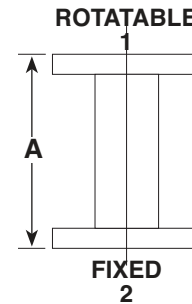
- 304 stainless steel

Product Notes

- Same size flange on both ends
- Clearance bolt holes
- One fixed and one rotatable flange per fitting
- Highly customizable - o-ring groove available (see chart below)

Options: Call for price and delivery

- Custom lengths
- Custom flange combinations



PART NUMBER	REFERENCE NUMBER	FLANGE O.D.	TUBE O.D.	A
6000301	100ASA-100-R-NS	4.25	1.00	6.50
6000302	100ASA-150-R-NS	4.25	1.50	6.50
6000303	100ASA-150-R-NL	4.25	1.50	8.00
6000304	150ASA-150-R-NS	5.00	1.50	6.50
6000305	150ASA-200-R-NS	5.00	2.00	6.50
6000306	150ASA-250-R-NS	5.00	2.50	6.50
6000307	150ASA-250-R-NL	5.00	2.50	8.00
6000308	200ASA-200-R-NS	6.00	2.00	7.00
6000309	200ASA-250-R-NS	6.00	2.50	7.00
6000310	200ASA-300-R-NS	6.00	3.00	7.00
6000311	200ASA-300-R-NL	6.00	3.00	8.50
6000312	300ASA-300-R-NS	7.50	3.00	8.26
6000313	300ASA-300-R-NL	7.50	3.00	9.75
6000314	300ASA-400-R-NS	7.50	4.00	8.26
6000315	300ASA-400-R-NL	7.50	4.00	10.24
6000316	400ASA-400-R-NS	9.00	4.00	8.26
6000317	400ASA-400-R-NL	9.00	4.00	10.24
6000318	400ASA-600-R-NS	9.00	6.00	10.50
6000319	400ASA-600-R-NL	9.00	6.00	12.62
6000320	600ASA-600-R-NS	11.00	6.00	10.76
6000321	600ASA-600-R-NL	11.00	6.00	12.88
6000322	600ASA-800-R-NS	11.00	8.00	10.76
6000323	600ASA-800-R-NL	11.00	8.00	14.76
6000324	800ASA-800-R-NS	13.50	8.00	15.50
6000325	800ASA-1000-R-NL	13.50	10.00	19.76
6000326	1000ASA-1000-R-NS	16.00	10.00	19.76
6000327	1000ASA-1200-R-NL	16.00	12.00	19.76

O-ring Groove Option

FLANGE SIZE PER. FLANGE	ADDITIONAL COST
100ASA	\$ 20.00
150ASA	\$ 20.00
200ASA	\$ 20.00
300ASA	\$ 35.00
400ASA	\$ 35.00
600ASA	\$ 50.00
800ASA	\$ 55.00
1000ASA	\$ 60.00

A&N ASA/ANSI flanged fittings come standard with a smooth flange face. The addition of an o-ring groove is a standard option. If you require a grooved flange the additional charge for this is detailed in this chart.

Let us know which flange(s) to add the groove to by referencing the reference number addition list below.

Please Note: Adding a groove is customizing this product and is no longer returnable.

- Add to the end of the reference number:
 - "-G1" Groove Flange 1
 - "-G2" Groove Flange 2
 - "-G1/2" Groove both Flanges

*ORDERING NOTE

Reducer nipple fittings are available on pg. 6.34 - 6.35



Flexible Nipple - Fixed Flanges

Materials

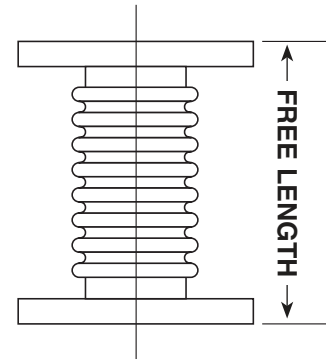
- Flanges - 304 stainless steel
- Flexible hose - 321 stainless steel formed bellows

Options: Call for price and delivery

- Larger sizes
- Custom lengths
- Custom flange combination

Product Notes

- Corrects misaligned connections
- Both flanges have a fixed bolt hole orientation
- O-ring groove available (see chart below)



PART NUMBER	REFERENCE NUMBER	FLANGE TYPE	HOSE I.D.	WALL THICKNESS	A
0800182	100ASA-100-F	100ASA	1.00	0.006	4.00
0800183	100ASA-150-F	100ASA	1.50	0.006	4.00
0800184	150ASA-200-F	150ASA	2.00	0.006	4.00
0800186	150ASA-250-F	150ASA	2.50	0.008	6.00
0800187	200ASA-300-F	200ASA	3.00	0.008	6.00
0800188	300ASA-400-F	300ASA	4.00	0.010	6.00
0800189	400ASA-400-F	400ASA	4.00	0.010	6.00
0800190	400ASA-600-F	400ASA	6.00	0.012	8.00
0800191	600ASA-600-F	600ASA	6.00	0.012	8.00

*** ORDERING NOTE**

For additional standard length flexible hose fittings see Section 11: Roughing Components

O-ring Groove Option

FLANGE SIZE PER. FLANGE	ADDITIONAL COST
100ASA	\$ 20.00
150ASA	\$ 20.00
200ASA	\$ 20.00
300ASA	\$ 35.00
400ASA	\$ 35.00
600ASA	\$ 50.00
800ASA	\$ 55.00
1000ASA	\$ 60.00

A&N ASA/ANSI flanged fittings come standard with a smooth flange face. The addition of an o-ring groove is a standard option. If you require a grooved flange the additional charge for this is detailed in this chart.

Let us know which flange(s) to add the groove to by referencing the reference number addition list below.

Please Note: Adding a groove is customizing this product and is no longer returnable.

- Add to the end of the reference number:
 - "-G1" Groove Flange 1
 - "-G1/2" Groove both Flanges

A&N Corporation

707 SW 19th Ave.
Williston, FL 32696
1(800) FLANGE1
FAX (352) 528-3441
www.ancorp.com



Flexible Nipple - Rotatable Flange

Materials

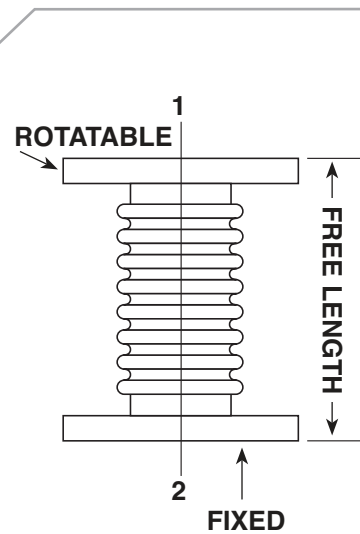
- Flanges
- 304 stainless steel
- Flexible hose
- 321 stainless steel formed bellows

Product Notes

- Corrects misaligned connections
- One fixed and one rotatable flange per fitting
- O-ring groove available (see chart below)

Options: Call for price and delivery

- Larger sizes
- Custom lengths
- Custom flange combination



PART NUMBER	REFERENCE NUMBER	FLANGE TYPE	HOSE I.D.	WALL THICKNESS	A
0800197	100ASA-100-RF	100ASA	1.00	0.006	4.00
0800198	100ASA-150-RF	100ASA	1.50	0.006	4.00
0800199	150ASA-200-RF	150ASA	2.00	0.006	4.00
0800200	150ASA-250-RF	150ASA	2.50	0.008	6.00
0800201	200ASA-300-RF	200ASA	3.00	0.008	6.00
0800202	300ASA-400-RF	300ASA	4.00	0.010	6.00
0800203	400ASA-400-RF	400ASA	4.00	0.010	6.00
0800204	400ASA-600-RF	400ASA	6.00	0.012	8.00
0800205	600ASA-600-RF	600ASA	6.00	0.012	8.00

*** ORDERING NOTE**

For additional standard length flexible hose fittings see Section 11: Roughing Components

O-ring Groove Option

FLANGE SIZE PER. FLANGE	ADDITIONAL COST
100ASA	\$ 20.00
150ASA	\$ 20.00
200ASA	\$ 20.00
300ASA	\$ 35.00
400ASA	\$ 35.00
600ASA	\$ 50.00
800ASA	\$ 55.00
1000ASA	\$ 60.00

A&N ASA/ANSI flanged fittings come standard with a smooth flange face. The addition of an o-ring groove is a standard option. If you require a grooved flange the additional charge for this is detailed in this chart.

Let us know which flange(s) to add the groove to by referencing the reference number addition list below.

Please Note: Adding a groove is customizing this product and is no longer returnable.

- Add to the end of the reference number:
 - "-G1" Groove Flange 1
 - "-G2" Groove Flange 2
 - "-G1/2" Groove both Flanges



Reducer Nipple - Fixed Flanges

Materials

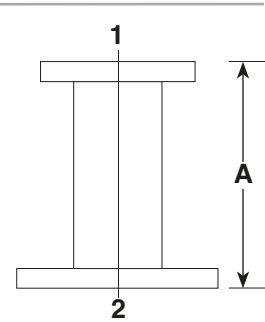
- 304 stainless steel

Product Notes

- Connects different size ASA/ANSI flanges
- Both flanges have a fixed bolt hole orientation
- O-ring groove available (see chart below)

Options: Call for price and delivery

- Custom lengths
- Conical reducer fitting
- Custom flange combinations



PART NUMBER	REFERENCE NUMBER	FLANGE 1 O. D.	FLANGE 2 O. D.	TUBE O. D.	A
6000328	150ASAx100ASA-N	4.25	5.00	1.50	5.00
6000329	200ASAx100ASA-N	4.25	6.00	1.50	5.00
6000330	200ASAx150ASA-N	5.00	6.00	2.00	5.00
6000331	300ASAx100ASA-N	4.25	7.50	1.50	5.00
6000332	300ASAx150ASA-N	5.00	7.50	2.00	5.00
6000333	300ASAx200ASA-N	6.00	7.50	3.00	5.00
6000334	400ASAx150ASA-N	5.00	9.00	2.00	5.00
6000335	400ASAx200ASA-N	6.00	9.00	3.00	5.00
6000336	400ASAx300ASA-N	7.50	9.00	4.00	5.00
6000337	600ASAx150ASA-N	5.00	11.00	2.00	5.00
6000338	600ASAx200ASA-N	6.00	11.00	3.00	5.00
6000339	600ASAx300ASA-N	7.50	11.00	4.00	5.00
6000340	600ASAx400ASA-N	9.00	11.00	6.00	5.00
6000341	800ASAx150ASA-N	5.00	13.50	2.00	5.00
6000342	800ASAx200ASA-N	6.00	13.50	3.00	5.00
6000343	800ASAx300ASA-N	7.50	13.50	4.00	5.00
6000344	800ASAx400ASA-N	9.00	13.50	6.00	5.00
6000345	800ASAx600ASA-N	11.00	13.50	8.00	5.00
6000346	1000ASAx150ASA-N	5.00	16.00	2.00	5.00
6000347	1000ASAx200ASA-N	6.00	16.00	3.00	5.00
6000348	1000ASAx300ASA-N	7.50	16.00	4.00	5.00
6000349	1000ASAx400ASA-N	9.00	16.00	6.00	5.00
6000350	1000ASAx600ASA-N	11.00	16.00	8.00	5.00
6000351	1000ASAx800ASA-N	13.50	16.00	10.00	5.00

O-ring Groove Option

FLANGE SIZE PER. FLANGE	ADDITIONAL COST
100ASA	\$ 20.00
150ASA	\$ 20.00
200ASA	\$ 20.00
300ASA	\$ 35.00
400ASA	\$ 35.00
600ASA	\$ 50.00
800ASA	\$ 55.00
1000ASA	\$ 60.00

A&N ASA/ANSI flanged fittings come standard with a smooth flange face. The addition of an o-ring groove is a standard option. If you require a grooved flange the additional charge for this is detailed in this chart.

Let us know which flange(s) to add the groove to by referencing the reference number addition list below.

Please Note: Adding a groove is customizing this product and is no longer returnable.

- Add to the end of the reference number:
 - "-G1" Groove Flange 1
 - "-G2" Groove Flange 2
 - "-G1/2" Groove both Flanges

A&N Corporation

707 SW 19th Ave.
Williston, FL 32696
1(800) FLANGE1
FAX (352) 528-3441
www.ancorp.com



Reducer Nipple - Rotatable Flange

Materials

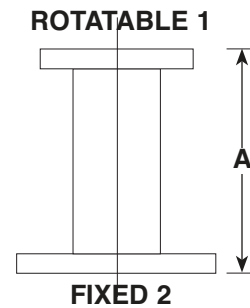
- 304 stainless steel

Product Notes

- Connects different size ASA/ANSI flanges
- One fixed and one rotatable flange per fitting
- O-ring groove available (see chart below)

Options: Call for price and delivery

- Custom lengths
- Conical reducer fitting
- Custom flange combinations



PART NUMBER	REFERENCE NUMBER	FLANGE 1 O.D.	FLANGE 2 O.D.	TUBE O.D.	A
6000352	150ASAx100ASA-R-N	4.25	5.00	1.50	5.00
6000353	200ASAx100ASA-R-N	4.25	6.00	1.50	5.00
6000354	200ASAx150ASA-R-N	5.00	6.00	2.00	5.00
6000355	300ASAx100ASA-R-N	4.25	7.50	1.50	5.00
6000356	300ASAx150ASA-R-N	5.00	7.50	2.00	5.00
6000357	300ASAx200ASA-R-N	6.00	7.50	3.00	5.00
6000358	400ASAx150ASA-R-N	5.00	9.00	2.00	5.00
6000359	400ASAx200ASA-R-N	6.00	9.00	3.00	5.00
6000360	400ASAx300ASA-R-N	7.50	9.00	4.00	5.00
6000361	600ASAx150ASA-R-N	5.00	11.00	2.00	5.00
6000362	600ASAx200ASA-R-N	6.00	11.00	3.00	5.00
6000363	600ASAx300ASA-R-N	7.50	11.00	4.00	5.00
6000364	600ASAx400ASA-R-N	9.00	11.00	6.00	5.00
6000365	800ASAx150ASA-R-N	5.00	13.50	2.00	5.00
6000366	800ASAx200ASA-R-N	6.00	13.50	3.00	5.00
6000367	800ASAx300ASA-R-N	7.50	13.50	4.00	5.00
6000368	800ASAx400ASA-R-N	9.00	13.50	6.00	5.00
6000369	800ASAx600ASA-R-N	11.00	13.50	8.00	5.00
6000370	1000ASAx150ASA-R-N	5.00	16.00	2.00	5.00
6000371	1000ASAx200ASA-R-N	6.00	16.00	3.00	5.00
6000372	1000ASAx300ASA-R-N	7.50	16.00	4.00	5.00
6000373	1000ASAx400ASA-R-N	9.00	16.00	6.00	5.00
6000374	1000ASAx600ASA-R-N	11.00	16.00	8.00	5.00
6000375	1000ASAx800ASA-R-N	13.50	16.00	10.00	5.00

O-ring Groove Option

FLANGE SIZE PER. FLANGE	ADDITIONAL COST
100ASA	\$ 20.00
150ASA	\$ 20.00
200ASA	\$ 20.00
300ASA	\$ 35.00
400ASA	\$ 35.00
600ASA	\$ 50.00
800ASA	\$ 55.00
1000ASA	\$ 60.00

A&N ASA/ANSI flanged fittings come standard with a smooth flange face. The addition of an o-ring groove is a standard option. If you require a grooved flange the additional charge for this is detailed in this chart.

Let us know which flange(s) to add the groove to by referencing the reference number addition list below.

Please Note: Adding a groove is customizing this product and is no longer returnable.

- Add to the end of the reference number:
 - "-G1" Groove Flange 1
 - "-G2" Groove Flange 2
 - "-G1/2" Groove both Flanges



45° Elbow - Fixed Flanges

Materials

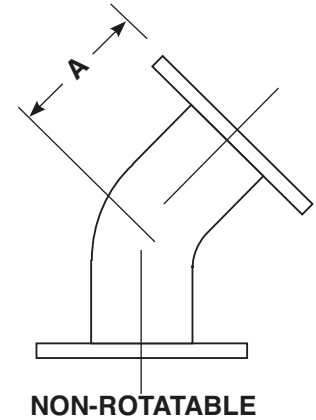
- 304 stainless steel

Product Notes

- Radius elbow design
- Both flanges have a fixed bolt hole orientation
- O-ring groove available (see chart below)

Options: Call for price and delivery

- Larger sizes
- Custom lengths
- Custom flange combinations



PART NUMBER	REFERENCE NUMBER	FLANGE O.D.	TUBE O.D.	A
6000487	100ASA-150-E45	4.25	1.50	1.78
6000488	150ASA-200-E45	5.00	2.00	2.09
6000489	200ASA-300-E45	6.00	3.00	3.93
6000490	300ASA-400-E45	7.50	4.00	5.03
6000491	400ASA-400-E45	9.00	4.00	5.03

O-ring Groove Option

FLANGE SIZE PER. FLANGE	ADDITIONAL COST
100ASA	\$ 20.00
150ASA	\$ 20.00
200ASA	\$ 20.00
300ASA	\$ 35.00
400ASA	\$ 35.00
600ASA	\$ 50.00
800ASA	\$ 55.00
1000ASA	\$ 60.00

A&N ASA/ANSI flanged fittings come standard with a smooth flange face. The addition of an o-ring groove is a standard option. If you require a grooved flange the additional charge for this is detailed in this chart.

Let us know which flange(s) to add the groove to by referencing the reference number addition list below.

Please Note: Adding a groove is customizing this product and is no longer returnable.

- Add to the end of the reference number:
 - "-G1" Groove Flange 1
 - "-G1/2" Groove both Flanges

A&N Corporation

707 SW 19th Ave.
 Williston, FL 32696
 1(800) FLANGE1
 FAX (352) 528-3441
 www.ancorp.com



45° Elbow - Rotatable Flange

Materials

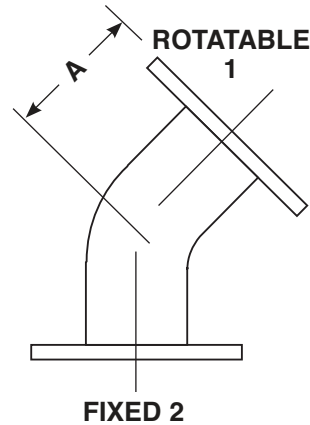
- 304 stainless steel

Product Notes

- Radius elbow design
- One fixed and one rotatable flange per fitting
- O-ring groove available (see chart below)

Options: Call for price and delivery

- Larger sizes
- Custom lengths
- Custom flange combinations



PART NUMBER	REFERENCE NUMBER	FLANGE O.D.	TUBE O.D.	A
6000493	100ASA-150-R-E45	4.25	1.50	1.78
6000494	150ASA-200-R-E45	5.00	2.00	2.09
6000495	200ASA-300-R-E45	6.00	3.00	3.93
6000496	300ASA-400-R-E45	7.50	4.00	5.03
6000497	400ASA-400-R-E45	9.00	4.00	5.03

O-ring Groove Option

FLANGE SIZE PER. FLANGE	ADDITIONAL COST
100ASA	\$ 20.00
150ASA	\$ 20.00
200ASA	\$ 20.00
300ASA	\$ 35.00
400ASA	\$ 35.00
600ASA	\$ 50.00
800ASA	\$ 55.00
1000ASA	\$ 60.00

A&N ASA/ANSI flanged fittings come standard with a smooth flange face. The addition of an o-ring groove is a standard option. If you require a grooved flange the additional charge for this is detailed in this chart.

Let us know which flange(s) to add the groove to by referencing the reference number addition list below.

Please Note: Adding a groove is customizing this product and is no longer returnable.

- Add to the end of the reference number:
 - "-G1" Groove Flange 1
 - "-G2" Groove Flange 2
 - "-G1/2" Groove both Flanges



90° Elbow - Fixed Flanges

Materials

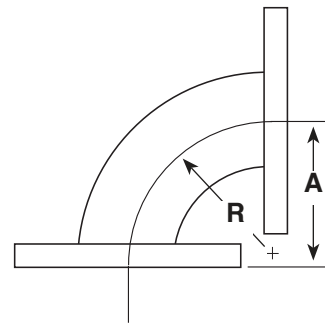
- 304 stainless steel

Product Notes

- Radius elbow design
- Both flanges have a fixed bolt hole orientation
- O-ring groove available (see chart below)

Options: Call for price and delivery

- Custom lengths
- Custom flange combinations



PART NUMBER	REFERENCE NUMBER	FLANGE O.D.	TUBE O.D.	A
6000499	100ASA-150-E90	4.25	1.50	2.66
6000500	150ASA-200-E90	5.00	2.00	3.25
6000501	200ASA-300-E90	6.00	3.00	4.75
6000502	300ASA-400-E90	7.50	4.00	6.25
6000503	400ASA-400-E90	9.00	4.00	6.25
6000504	400ASA-600-E90	9.00	6.00	9.25
6000505	600ASA-600-E90	11.00	6.00	9.38
6000506	600ASA-800-E90	11.00	8.00	12.38
6000507	800ASA-800-E90	13.50	8.00	12.38
6000508	800ASA-1000-E90	13.50	10.00	15.38
6000509	1000ASA-1000-E90	16.00	10.00	15.38

O-ring Groove Option

FLANGE SIZE PER. FLANGE	ADDITIONAL COST
100ASA	\$ 20.00
150ASA	\$ 20.00
200ASA	\$ 20.00
300ASA	\$ 35.00
400ASA	\$ 35.00
600ASA	\$ 50.00
800ASA	\$ 55.00
1000ASA	\$ 60.00

A&N ASA/ANSI flanged fittings come standard with a smooth flange face. The addition of an o-ring groove is a standard option. If you require a grooved flange the additional charge for this is detailed in this chart.

Let us know which flange(s) to add the groove to by referencing the reference number addition list below.

Please Note: Adding a groove is customizing this product and is no longer returnable.

- Add to the end of the reference number:
 - "-G1" Groove Flange 1
 - "-G1/2" Groove both Flanges

A&N Corporation

707 SW 19th Ave.
 Williston, FL 32696
 1(800) FLANGE1
 FAX (352) 528-3441
 www.ancorp.com



90° Elbow - Rotatable Flange

Materials

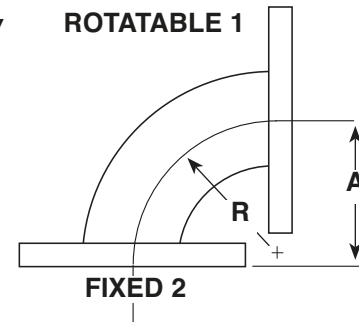
- 304 stainless steel

Product Notes

- Radius elbow design
- One fixed and one rotatable flange per fitting
- O-ring groove available (see chart below)

Options: Call for price and delivery

- Custom lengths
- Custom flange combinations



PART NUMBER	REFERENCE NUMBER	FLANGE O.D.	TUBE O.D.	A
6000511	100ASA-150-R-E90	4.25	1.50	2.66
6000512	150ASA-200-R-E90	5.00	2.00	3.25
6000513	200ASA-300-R-E90	6.00	3.00	4.75
6000514	300ASA-400-R-E90	7.50	4.00	6.25
6000515	400ASA-400-R-E90	9.00	4.00	6.25
6000516	400ASA-600-R-E90	9.00	6.00	9.25
6000517	600ASA-600-R-E90	11.00	6.00	9.38
6000518	600ASA-800-R-E90	11.00	8.00	12.38
6000519	800ASA-800-R-E90	13.50	8.00	12.38
6000520	800ASA-1000-R-E90	13.50	10.00	15.38
6000521	1000ASA-1000-R-E90	16.00	10.00	15.38

O-ring Groove Option

FLANGE SIZE PER. FLANGE	ADDITIONAL COST
100ASA	\$ 20.00
150ASA	\$ 20.00
200ASA	\$ 20.00
300ASA	\$ 35.00
400ASA	\$ 35.00
600ASA	\$ 50.00
800ASA	\$ 55.00
1000ASA	\$ 60.00

A&N ASA/ANSI flanged fittings come standard with a smooth flange face. The addition of an o-ring groove is a standard option. If you require a grooved flange the additional charge for this is detailed in this chart.

Let us know which flange(s) to add the groove to by referencing the reference number addition list below.

Please Note: Adding a groove is customizing this product and is no longer returnable.

- Add to the end of the reference number:
 - "-G1" Groove Flange 1
 - "-G2" Groove Flange 2
 - "-G1/2" Groove both Flanges



90° Mitered Elbow - Fixed Flanges

Materials

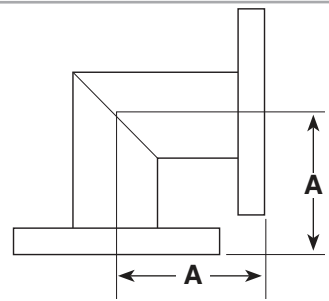
- 304 stainless steel

Product Notes

- Both flanges have a fixed bolt hole orientation
- O-ring groove available (see chart below)

Options: Call for price and delivery

- Custom lengths
- Custom flange combinations



PART NUMBER	REFERENCE NUMBER	FLANGE O.D.	TUBE O.D.	A
6000523	100ASA-150-E90M	4.25	1.50	3.25
6000525	150ASA-200-E90M	5.00	2.00	3.25
6000526	150ASA-250-E90M	5.00	2.50	3.25
6000529	200ASA-300-E90M	6.00	3.00	5.12
6000530	300ASA-300-E90M	7.50	3.00	5.12
6000531	300ASA-400-E90M	7.50	4.00	5.12
6000532	400ASA-400-E90M	9.00	4.00	5.12
6000533	400ASA-600-E90M	9.00	6.00	5.25
6000534	600ASA-600-E90M	11.00	6.00	6.44
6000535	600ASA-800-E90M	11.00	8.00	7.38
6000536	800ASA-800-E90M	13.50	8.00	7.75
6000537	800ASA-1000-E90M	13.50	10.00	9.88
6000538	1000ASA-1000-E90M	16.00	10.00	9.88

O-ring Groove Option

FLANGE SIZE PER. FLANGE	ADDITIONAL COST
100ASA	\$ 20.00
150ASA	\$ 20.00
200ASA	\$ 20.00
300ASA	\$ 35.00
400ASA	\$ 35.00
600ASA	\$ 50.00
800ASA	\$ 55.00
1000ASA	\$ 60.00

A&N ASA/ANSI flanged fittings come standard with a smooth flange face. The addition of an o-ring groove is a standard option. If you require a grooved flange the additional charge for this is detailed in this chart.

Let us know which flange(s) to add the groove to by referencing the reference number addition list below.

Please Note: Adding a groove is customizing this product and is no longer returnable.

- Add to the end of the reference number:
 - "-G1" Groove Flange 1
 - "-G1/2" Groove both Flanges

A&N Corporation

707 SW 19th Ave.
Williston, FL 32696
1(800) FLANGE1
FAX (352) 528-3441
www.ancorp.com



90° Mitered Elbow - Rotatable Flange

Materials

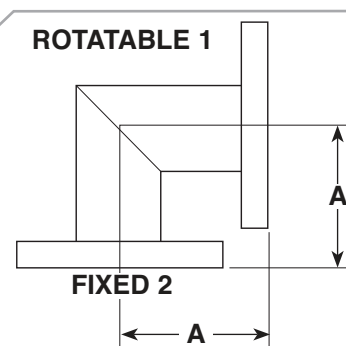
- 304 stainless steel

Product Notes

- One fixed and one rotatable flange per fitting
- O-ring groove available (see chart below)

Options: Call for price and delivery

- Custom lengths
- Custom flange combinations



PART NUMBER	REFERENCE NUMBER	FLANGE O.D.	TUBE O.D.	A
6000540	100ASA-150-R-E90M	4.25	1.50	3.25
6000542	150ASA-200-R-E90M	5.00	2.00	3.25
6000543	150ASA-250-R-E90M	5.00	2.50	3.25
6000546	200ASA-300-R-E90M	6.00	3.00	5.12
6000547	300ASA-300-R-E90M	7.50	3.00	5.12
6000548	300ASA-400-R-E90M	7.50	4.00	5.12
6000549	400ASA-400-R-E90M	9.00	4.00	5.12
6000550	400ASA-600-R-E90M	9.00	6.00	5.25
6000551	600ASA-600-R-E90M	11.00	6.00	6.44
6000552	600ASA-800-R-E90M	11.00	8.00	7.38
6000553	800ASA-800-R-E90M	13.50	8.00	7.75
6000554	800ASA-1000-R-E90M	13.50	10.00	9.88
6000555	1000ASA-1000-R-E90M	16.00	10.00	9.88

O-ring Groove Option

FLANGE SIZE PER. FLANGE	ADDITIONAL COST
100ASA	\$ 20.00
150ASA	\$ 20.00
200ASA	\$ 20.00
300ASA	\$ 35.00
400ASA	\$ 35.00
600ASA	\$ 50.00
800ASA	\$ 55.00
1000ASA	\$ 60.00

A&N ASA/ANSI flanged fittings come standard with a smooth flange face. The addition of an o-ring groove is a standard option. If you require a grooved flange the additional charge for this is detailed in this chart.

Let us know which flange(s) to add the groove to by referencing the reference number addition list below.

Please Note: Adding a groove is customizing this product and is no longer returnable.

- Add to the end of the reference number:

- "-G1" Groove Flange 1
- "-G2" Groove Flange 2
- "-G1/2" Groove both Flanges



Tee - Fixed Flanges

Materials

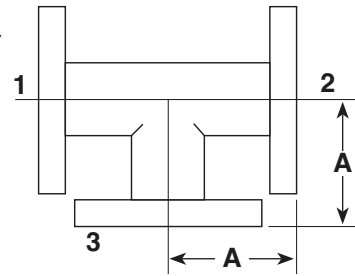
- 304 stainless steel

Product Notes

- Pulled ports for optimum vacuum performance
- Flanges have a fixed bolt hole orientation
- O-ring groove available (see chart below)

Options: Call for price and delivery

- Custom lengths
- Custom flange combinations
- Reducing tee fittings



PART NUMBER	REFERENCE NUMBER	FLANGE O.D.	TUBE O.D.	A
6000557	100ASA-150-T	4.25	1.50	2.50
6000559	150ASA-200-T	5.00	2.00	3.25
6000560	150ASA-250-T	5.00	2.50	3.25
6000563	200ASA-300-T	6.00	3.00	3.50
6000565	300ASA-400-T	7.50	4.00	5.12
6000566	400ASA-400-T	9.00	4.00	5.12
6000567	400ASA-600-T	9.00	6.00	5.25
6000568	600ASA-600-T	11.00	6.00	6.44
6000569	600ASA-800-T	11.00	8.00	7.38
6000570	800ASA-800-T	13.50	8.00	7.75
6000571	800ASA-1000-T	13.50	10.00	9.88
6000572	1000ASA-1000-T	16.00	10.00	9.88

O-ring Groove Option

FLANGE SIZE PER. FLANGE	ADDITIONAL COST
100ASA	\$ 20.00
150ASA	\$ 20.00
200ASA	\$ 20.00
300ASA	\$ 35.00
400ASA	\$ 35.00
600ASA	\$ 50.00
800ASA	\$ 55.00
1000ASA	\$ 60.00

A&N ASA/ANSI flanged fittings come standard with a smooth flange face. The addition of an o-ring groove is a standard option. If you require a grooved flange the additional charge for this is detailed in this chart.

Let us know which flange(s) to add the groove to by referencing the reference number addition notes to the right.

Please Note: Adding a groove is customizing this product and is no longer returnable.

- Add to the end of the reference number: "-G1" Groove Flange 1, "-G2" Groove Flange 2, etc.
- Add to the end of the reference number: "-G1/2" Groove flange 1 and 2
"-G1/3" Groove flange 1 and 3, etc.

A&N Corporation

707 SW 19th Ave.
Williston, FL 32696
1(800) FLANGE1
FAX (352) 528-3441
www.ancorp.com



Tee - Rotatable Flanges

Materials

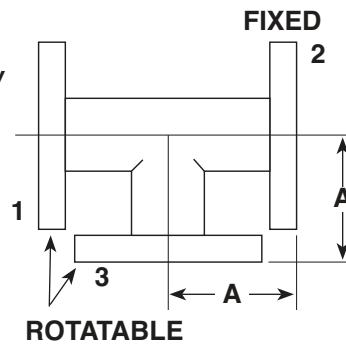
- 304 stainless steel

Product Notes

- Pulled ports for optimum vacuum performance
- One Fixed and one Rotatable flange per axis
- O-ring groove available (see chart below)

Options: Call for price and delivery

- Custom lengths
- Custom flange combinations
- Reducing tee fittings



PART NUMBER	REFERENCE NUMBER	FLANGE O.D.	TUBE O.D.	A
6000574	100ASA-150-R-T	4.25	1.50	2.50
6000576	150ASA-200-R-T	5.00	2.00	3.25
6000577	150ASA-250-R-T	5.00	2.50	3.25
6000580	200ASA-300-R-T	6.00	3.00	3.50
6000582	300ASA-400-R-T	7.50	4.00	5.12
6000583	400ASA-400-R-T	9.00	4.00	5.12
6000584	400ASA-600-R-T	9.00	6.00	5.25
6000585	600ASA-600-R-T	11.00	6.00	6.44
6000586	600ASA-800-R-T	11.00	8.00	7.38
6000587	800ASA-800-R-T	13.50	8.00	7.75
6000588	800ASA-1000-R-T	13.50	10.00	9.88
6000589	1000ASA-1000-R-T	16.00	10.00	9.88

O-ring Groove Option

FLANGE SIZE PER. FLANGE	ADDITIONAL COST
100ASA	\$ 20.00
150ASA	\$ 20.00
200ASA	\$ 20.00
300ASA	\$ 35.00
400ASA	\$ 35.00
600ASA	\$ 50.00
800ASA	\$ 55.00
1000ASA	\$ 60.00

A&N ASA/ANSI flanged fittings come standard with a smooth flange face. The addition of an o-ring groove is a standard option. If you require a grooved flange the additional charge for this is detailed in this chart.

Let us know which flange(s) to add the groove to by referencing the reference number addition notes to the right.

Please Note: Adding a groove is customizing this product and is no longer returnable.

- Add to the end of the reference number: "-G1" Groove Flange 1, "-G2" Groove Flange 2, etc.
- Add to the end of the reference number: "-G1/2" Groove flange 1 and 2
"-G1/3" Groove flange 1 and 3, etc.



Cross - Fixed Flanges

Materials

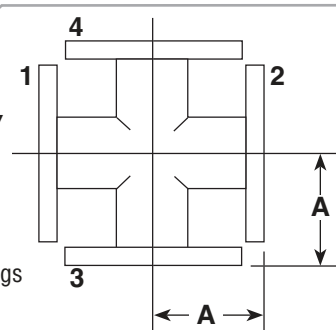
- 304 stainless steel

Product Notes

- Pulled ports for optimum vacuum performance
- Flanges have a fixed bolt hole orientation
- O-ring groove available (see chart below)

Options: Call for price and delivery

- Custom lengths
- Custom flange combinations
- Reducing cross fittings



PART NUMBER	REFERENCE NUMBER	FLANGE O.D.	TUBE O.D.	A
6000591	100ASA-150-X	4.25	1.50	2.50
6000593	150ASA-200-X	5.00	2.00	3.25
6000594	150ASA-250-X	5.00	2.50	3.25
6000597	200ASA-300-X	6.00	3.00	3.50
6000599	300ASA-400-X	7.50	4.00	5.12
6000600	400ASA-400-X	9.00	4.00	5.12
6000601	400ASA-600-X	9.00	6.00	5.25
6000602	600ASA-600-X	11.00	6.00	6.44
6000603	600ASA-800-X	11.00	8.00	7.38
6000604	800ASA-800-X	13.50	8.00	7.75
6000605	800ASA-1000-X	13.50	10.00	9.88
6000606	1000ASA-1000-X	16.00	10.00	9.88

O-ring Groove Option

FLANGE SIZE PER. FLANGE	ADDITIONAL COST
100ASA	\$ 20.00
150ASA	\$ 20.00
200ASA	\$ 20.00
300ASA	\$ 35.00
400ASA	\$ 35.00
600ASA	\$ 50.00
800ASA	\$ 55.00
1000ASA	\$ 60.00

A&N ASA/ANSI flanged fittings come standard with a smooth flange face. The addition of an o-ring groove is a standard option. If you require a grooved flange the additional charge for this is detailed in this chart.

Let us know which flange(s) to add the groove to by referencing the reference number addition notes to the right.

Please Note: Adding a groove is customizing this product and is no longer returnable.

- Add to the end of the reference number: "-G1" Groove Flange 1, "-G2" Groove Flange 2, etc.
- Add to the end of the reference number: "-G1/2" Groove flange 1 and 2
"-G1/3" Groove flange 1 and 3, etc.

A&N Corporation

707 SW 19th Ave.
Williston, FL 32696
1(800) FLANGE1
FAX (352) 528-3441
www.ancorp.com



Cross – Rotatable Flanges

Materials

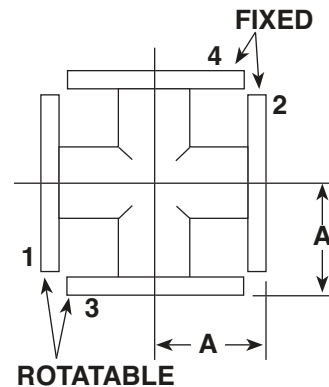
- 304 stainless steel

Product Notes

- Pulled ports for optimum vacuum performance
- One fixed and one rotatable flange per axis
- O-ring groove available (see chart below)

Options: Call for price and delivery

- Custom lengths
- Custom flange combinations
- Reducing cross fittings



PART NUMBER	REFERENCE NUMBER	FLANGE O.D.	TUBE O.D.	A
6000608	100ASA-150-R-X	4.25	1.50	2.50
6000610	150ASA-200-R-X	5.00	2.00	3.25
6000611	150ASA-250-R-X	5.00	2.50	3.25
6000614	200ASA-300-R-X	6.00	3.00	3.50
6000616	300ASA-400-R-X	7.50	4.00	5.12
6000617	400ASA-400-R-X	9.00	4.00	5.12
6000618	400ASA-600-R-X	9.00	6.00	5.25
6000619	600ASA-600-R-X	11.00	6.00	6.44
6000620	600ASA-800-R-X	11.00	8.00	7.38
6000621	800ASA-800-R-X	13.50	8.00	7.75
6000622	800ASA-1000-R-X	13.50	10.00	9.88
6000623	1000ASA-1000-R-X	16.00	10.00	9.88

O-ring Groove Option

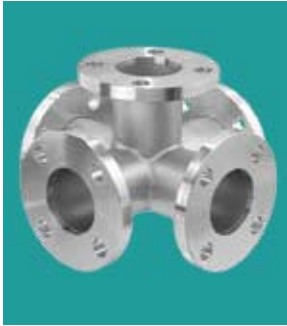
FLANGE SIZE PER. FLANGE	ADDITIONAL COST
100ASA	\$ 20.00
150ASA	\$ 20.00
200ASA	\$ 20.00
300ASA	\$ 35.00
400ASA	\$ 35.00
600ASA	\$ 50.00
800ASA	\$ 55.00
1000ASA	\$ 60.00

A&N ASA/ANSI flanged fittings come standard with a smooth flange face. The addition of an o-ring groove is a standard option. If you require a grooved flange the additional charge for this is detailed in this chart.

Let us know which flange(s) to add the groove to by referencing the reference number addition notes to the right.

Please Note: Adding a groove is customizing this product and is no longer returnable.

- Add to the end of the reference number: "-G1" Groove Flange 1, "-G2" Groove Flange 2, etc.
- Add to the end of the reference number: "-G1/2" Groove flange 1 and 2
"-G1/3" Groove flange 1 and 3, etc.



5-Way Cross - Fixed Flanges

Materials

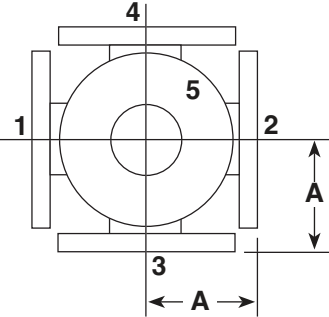
- 304 stainless steel

Product Notes

- Pulled ports for optimum vacuum performance
- Flanges have a fixed bolt hole orientation
- O-ring groove available (see chart below)

Options: Call for price and delivery

- Custom lengths
- Custom flange combinations



PART NUMBER	REFERENCE NUMBER	FLANGE O.D.	TUBE O.D.	A
6000625	100ASA-150-5X	4.25	1.50	2.50
6000626	150ASA-200-5X	5.00	2.00	3.25
6000627	150ASA-250-5X	5.00	2.50	3.25
6000629	200ASA-300-5X	6.00	3.00	3.50
6000631	300ASA-400-5X	7.50	4.00	5.12
6000632	400ASA-400-5X	9.00	4.00	5.12
6000633	400ASA-600-5X	9.00	6.00	5.25
6000634	600ASA-600-5X	11.00	6.00	6.44
6000635	600ASA-800-5X	11.00	8.00	7.38
6000636	800ASA-800-5X	13.50	8.00	7.75
6000637	800ASA-1000-5X	13.50	10.00	9.88
6000638	1000ASA-1000-5X	16.00	10.00	9.88

O-ring Groove Option

FLANGE SIZE PER. FLANGE	ADDITIONAL COST
100ASA	\$ 20.00
150ASA	\$ 20.00
200ASA	\$ 20.00
300ASA	\$ 35.00
400ASA	\$ 35.00
600ASA	\$ 50.00
800ASA	\$ 55.00
1000ASA	\$ 60.00

A&N ASA/ANSI flanged fittings come standard with a smooth flange face. The addition of an o-ring groove is a standard option. If you require a grooved flange the additional charge for this is detailed in this chart.

Let us know which flange(s) to add the groove to by referencing the reference number addition notes to the right.

Please Note: Adding a groove is customizing this product and is no longer returnable.

- Add to the end of the reference number: "-G1" Groove Flange 1, "-G2" Groove Flange 2, etc.
- Add to the end of the reference number: "-G1/2" Groove flange 1 and 2
"-G1/3" Groove flange 1 and 3, etc.

A&N Corporation

707 SW 19th Ave.
Williston, FL 32696
1(800) FLANGE1
FAX (352) 528-3441
www.ancorp.com



5-Way Cross - Rotatable Flanges

Materials

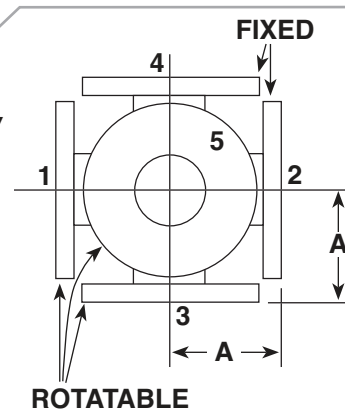
- 304 stainless steel

Product Notes

- Pulled ports for optimum vacuum performance
- One fixed and one rotatable flange per axis
- O-ring groove available (see chart below)

Options: Call for price and delivery

- Custom lengths
- Custom flange combinations



PART NUMBER	REFERENCE NUMBER	FLANGE O.D.	TUBE O.D.	A
6000640	100ASA-150-R-5X	4.25	1.50	2.50
6000641	150ASA-200-R-5X	5.00	2.00	3.25
6000642	150ASA-250-R-5X	5.00	2.50	3.25
6000644	200ASA-300-R-5X	6.00	3.00	3.50
6000646	300ASA-400-R-5X	7.50	4.00	5.12
6000647	400ASA-400-R-5X	9.00	4.00	5.12
6000648	400ASA-600-R-5X	9.00	6.00	5.25
6000649	600ASA-600-R-5X	11.00	6.00	6.44
6000650	600ASA-800-R-5X	11.00	8.00	7.38
6000651	800ASA-800-R-5X	13.50	8.00	7.75
6000652	800ASA-1000-R-5X	13.50	10.00	9.88
6000653	1000ASA-1000-R-5X	16.00	10.00	9.88

O-ring Groove Option

FLANGE SIZE PER. FLANGE	ADDITIONAL COST
100ASA	\$ 20.00
150ASA	\$ 20.00
200ASA	\$ 20.00
300ASA	\$ 35.00
400ASA	\$ 35.00
600ASA	\$ 50.00
800ASA	\$ 55.00
1000ASA	\$ 60.00

A&N ASA/ANSI flanged fittings come standard with a smooth flange face. The addition of an o-ring groove is a standard option. If you require a grooved flange the additional charge for this is detailed in this chart.

Let us know which flange(s) to add the groove to by referencing the reference number addition notes to the right.

Please Note: Adding a groove is customizing this product and is no longer returnable.

- Add to the end of the reference number: "-G1" Groove Flange 1, "-G2" Groove Flange 2, etc.
- Add to the end of the reference number: "-G1/2" Groove flange 1 and 2
"-G1/3" Groove flange 1 and 3, etc.



6-Way Cross - Fixed Flanges

Materials

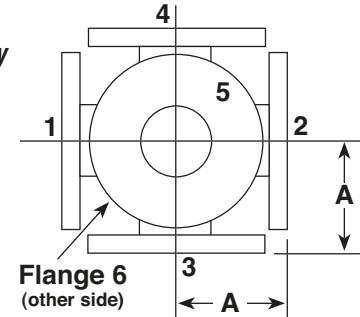
- 304 stainless steel

Product Notes

- Pulled ports for optimum vacuum performance
- Flanges have a fixed bolt hole orientation
- O-ring groove available (see chart below)

Options: Call for price and delivery

- Custom lengths
- Custom flange combinations



PART NUMBER	REFERENCE NUMBER	FLANGE O.D.	TUBE O.D.	A
6000655	100ASA-150-6X	4.25	1.50	2.50
6000656	150ASA-200-6X	5.00	2.00	3.25
6000657	150ASA-250-6X	5.00	2.50	3.25
6000659	200ASA-300-6X	6.00	3.00	3.50
6000661	300ASA-400-6X	7.50	4.00	5.12
6000662	400ASA-400-6X	9.00	4.00	5.12
6000663	400ASA-600-6X	9.00	6.00	5.25
6000664	600ASA-600-6X	11.00	6.00	6.44
6000665	600ASA-800-6X	11.00	8.00	7.38
6000667	800ASA-800-6X	13.50	8.00	7.75
6000668	800ASA-1000-6X	13.50	10.00	9.88
6000669	1000ASA-1000-6X	16.00	10.00	9.88

O-ring Groove Option

FLANGE SIZE PER. FLANGE	ADDITIONAL COST
100ASA	\$ 20.00
150ASA	\$ 20.00
200ASA	\$ 20.00
300ASA	\$ 35.00
400ASA	\$ 35.00
600ASA	\$ 50.00
800ASA	\$ 55.00
1000ASA	\$ 60.00

A&N ASA/ANSI flanged fittings come standard with a smooth flange face. The addition of an o-ring groove is a standard option. If you require a grooved flange the additional charge for this is detailed in this chart.

Let us know which flange(s) to add the groove to by referencing the reference number addition notes to the right.

Please Note: Adding a groove is customizing this product and is no longer returnable.

- Add to the end of the reference number: "-G1" Groove Flange 1, "-G2" Groove Flange 2, etc.
- Add to the end of the reference number: "-G1/2" Groove flange 1 and 2
"-G1/3" Groove flange 1 and 3, etc.

A&N Corporation

707 SW 19th Ave.
Williston, FL 32696
1(800) FLANGE1
FAX (352) 528-3441
www.ancorp.com



6-Way Cross - Rotatable Flanges

Materials

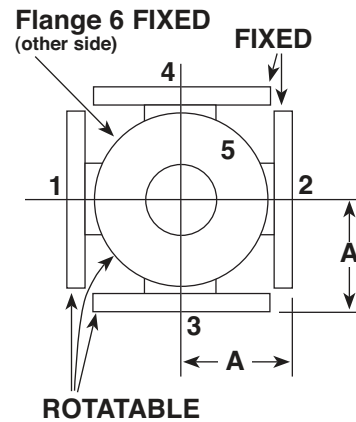
- 304 stainless steel

Product Notes

- Pulled ports for optimum vacuum performance
- One fixed and one rotatable flange per axis
- O-ring groove available (see chart below)

Options: Call for price and delivery

- Custom lengths
- Custom flange combinations



PART NUMBER	REFERENCE NUMBER	FLANGE O.D.	TUBE O.D.	A
6000671	100ASA-150-R-6X	4.25	1.50	2.50
6000672	150ASA-200-R-6X	5.00	2.00	3.25
6000673	150ASA-250-R-6X	5.00	2.50	3.25
6000675	200ASA-300-R-6X	6.00	3.00	3.50
6000677	300ASA-400-R-6X	7.50	4.00	5.12
6000678	400ASA-400-R-6X	9.00	4.00	5.12
6000679	400ASA-600-R-6X	9.00	6.00	5.25
6000680	600ASA-600-R-6X	11.00	6.00	6.44
6000681	600ASA-800-R-6X	11.00	8.00	7.38
6000682	800ASA-800-R-6X	13.50	8.00	7.75
6000683	800ASA-1000-R-6X	13.50	10.00	9.88
6000684	1000ASA-1000-R-6X	16.00	10.00	9.88

O-ring Groove Option

FLANGE SIZE PER. FLANGE	ADDITIONAL COST
100ASA	\$ 20.00
150ASA	\$ 20.00
200ASA	\$ 20.00
300ASA	\$ 35.00
400ASA	\$ 35.00
600ASA	\$ 50.00
800ASA	\$ 55.00
1000ASA	\$ 60.00

A&N ASA/ANSI flanged fittings come standard with a smooth flange face. The addition of an o-ring groove is a standard option. If you require a grooved flange the additional charge for this is detailed in this chart.

Let us know which flange(s) to add the groove to by referencing the reference number addition notes to the right.

Please Note: Adding a groove is customizing this product and is no longer returnable.

- Add to the end of the reference number: "-G1" Groove Flange 1, "-G2" Groove Flange 2, etc.
- Add to the end of the reference number: "-G1/2" Groove flange 1 and 2
"-G1/3" Groove flange 1 and 3, etc.



Hybrid Adaptors

CF to LF Conical Reducer**QF to ASA****QF to Quick Disconnect****QF to NPT Female****QF to Swagelok®****QF to Ball Socket Grooved**

A&N Corporation offers an extensive selection of standard adapters to ease design and assembly of your vacuum systems. *Adapter Fittings and Flanges* are used to change from one family of flanges to another.

For example, ISO-QF25 to CF275. For these products see *Section 8: Hybrid Adaptors*

Please Note: There is a difference between adapters (described above) and reducers. *Reducer Fittings* are used to reduce the size of flanges and tubing used within the same flange family. For example, CF600 to CF275 or ISO-LF63 to ISO-QF40. These products are listed with the fittings components for that flange family.

A&N Corporation

707 SW 19th Ave.
Williston, FL 32696
1(800) FLANGE1
FAX (352) 528-3441
www.ancorp.com